

Minimal Residual Disease for CLL by Flow Cytometry (Not Accredited) Programme

Distribution - 202104

Sample - 041

Participant ID -

Date Issued - 26 January 2021

Closing Date - 15 February 2021

Machine Used - FACSCanto II

Trial Comments

This exercise was issued to 58 participants.

Sample Comments

The sample was manufactured by UK NEQAS using a CLL patient sample and a stabilised whole blood unit

Results and Performance

Percentage MRD Population	Your Results (%)	Robust Mean (%)	Robust SD (%)
	0.0116	0.0640	0.0292

Percentage MRD Population	z Score*	Performance Status for this Sample	Performance Status Classification Over 12 Sample Period		
			Satisfactory	Action	Critical
	-1.79	Satisfactory	12	0	0

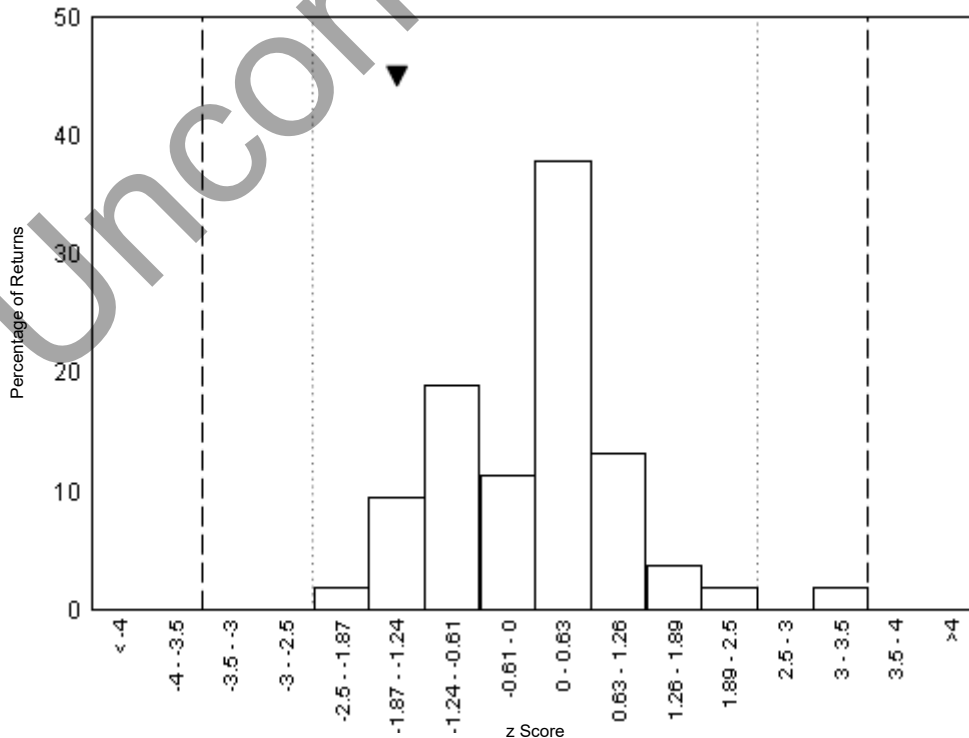
***z Score Limits Definitions**

Please note the scale below is applicable to the tables above and to the z score histograms and Shewhart control charts that follow. It is not applicable to the Cusum control charts.



Histograms of Participant z Scores

Percentage MRD Population -
Please note ▼ denotes your result



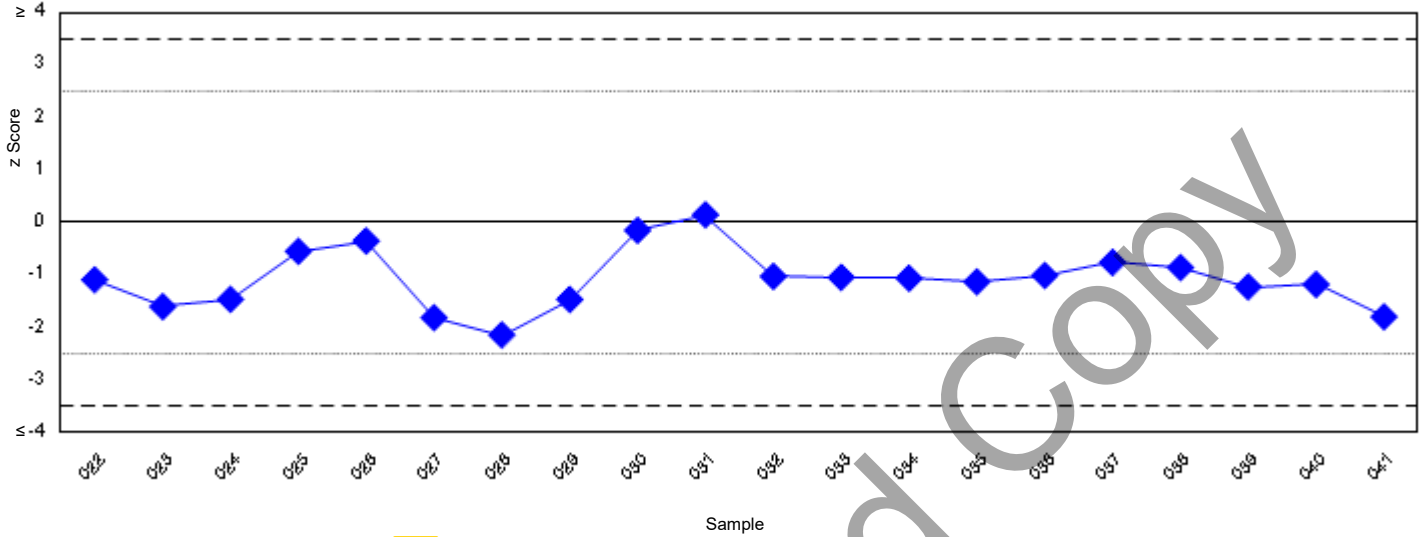
Minimal Residual Disease for CLL by Flow Cytometry (Not Accredited) Programme

Shewhart Control Charts

(Please note each data point represents a single sample)



Values (Percentage MRD Population)

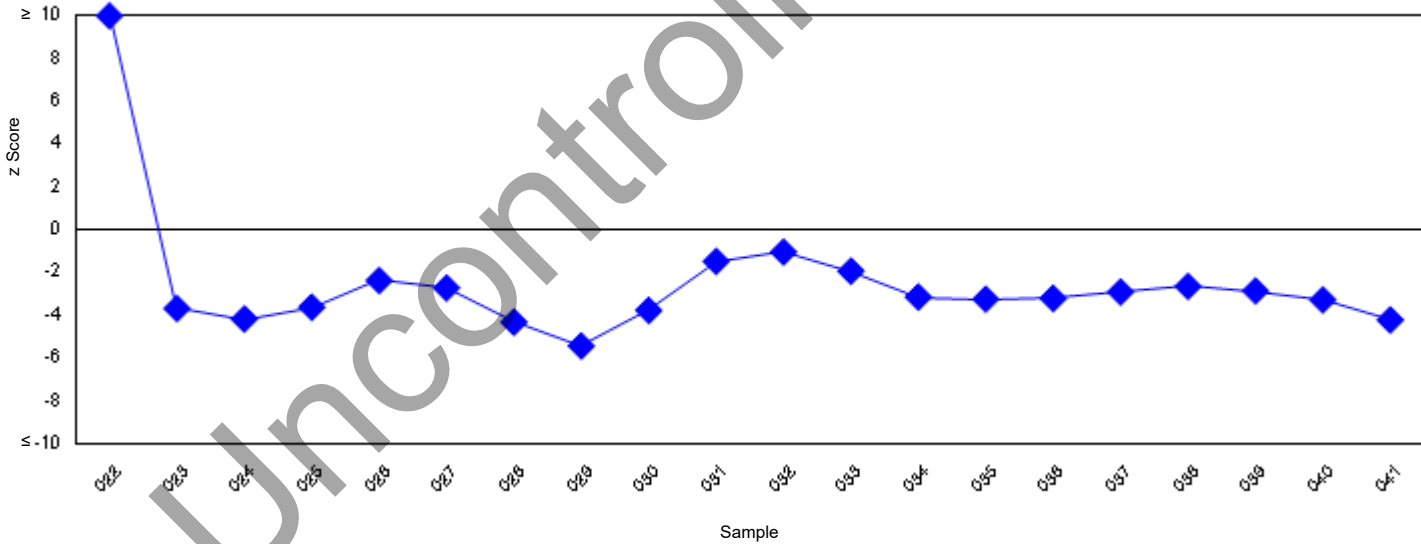


Cusum Control Charts



(Please note each data point represents the sum of the z scores of the current sample and the two previous samples)

Values (Percentage MRD Population)



Minimal Residual Disease for CLL by Flow Cytometry (Not Accredited) Programme

Flow Cytometer Specific Statistics

(Please note only groups of >0 returns are displayed)

Method	Count Values (%)		
	Returns	Robust Mean	Robust SD
DxFLEX	1	0.0050	0.0000
FACSCanto II	25	0.0694	0.0287
FACSLyric	8	0.0669	0.0291
FC-500	1	0.1100	0.0000
Gallios	1	0.0700	0.0000
LSR	1	0.0780	0.0000
LSRFortessa	1	0.0500	0.0000
Navios	15	0.0523	0.0298

MRD Group Specific Statistics

(Please note only groups of >0 returns are displayed)

Method	Count Values (%)		
	Returns	Robust Mean	Robust SD
ERIC	5	0.0736	0.0068
Not-Affiliated	44	0.0634	0.0309
Other	4	0.0570	0.0256

Minimal Residual Disease for CLL by Flow Cytometry (Not Accredited) Programme

Distribution - 202104

Sample - 042

Participant ID -

Date Issued - 26 January 2021

Closing Date - 15 February 2021

Machine Used - FACSCanto II

Trial Comments

This exercise was issued to 58 participants.

Sample Comments

The sample was manufactured by UK NEQAS using a CLL patient sample and a stabilised whole blood unit

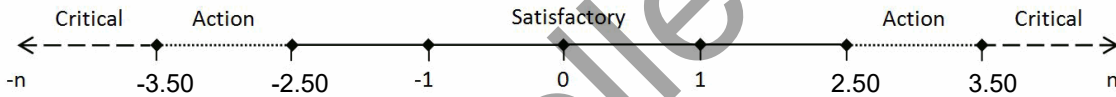
Results and Performance

Percentage MRD Population	Your Results (%)	Robust Mean (%)	Robust SD (%)
	0.0154	0.0573	0.0293

Percentage MRD Population	z Score*	Performance Status for this Sample	Performance Status Classification Over 12 Sample Period		
			Satisfactory	Action	Critical
	-1.43	Satisfactory	12	0	0

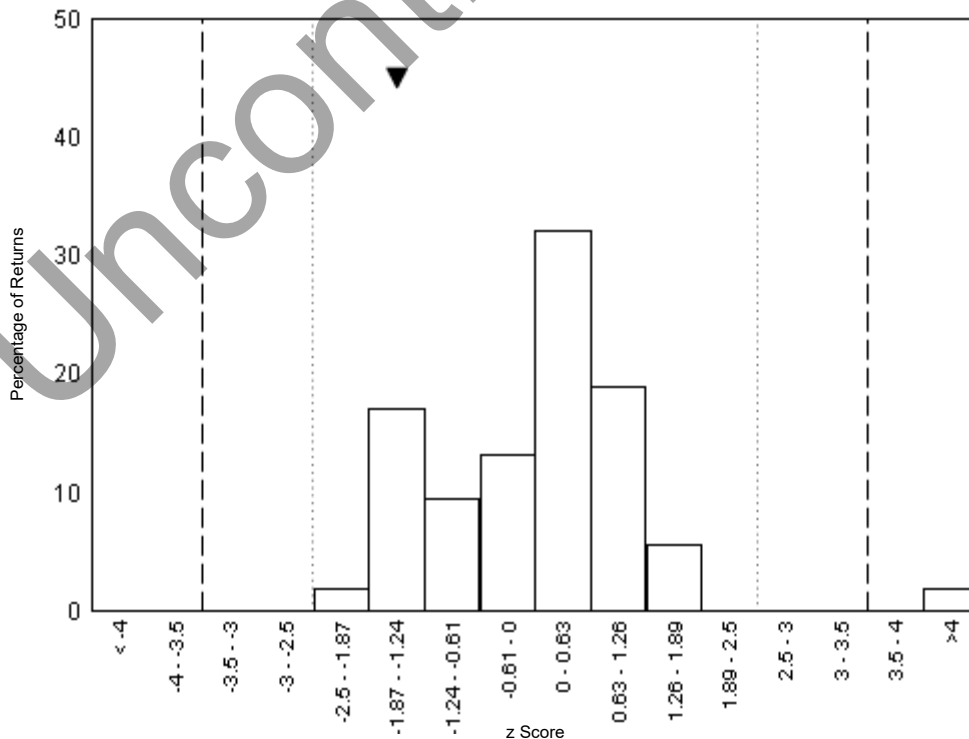
***z Score Limits Definitions**

Please note the scale below is applicable to the tables above and to the z score histograms and Shewhart control charts that follow. It is not applicable to the Cusum control charts.



Histograms of Participant z Scores

Percentage MRD Population -
Please note ▼ denotes your result

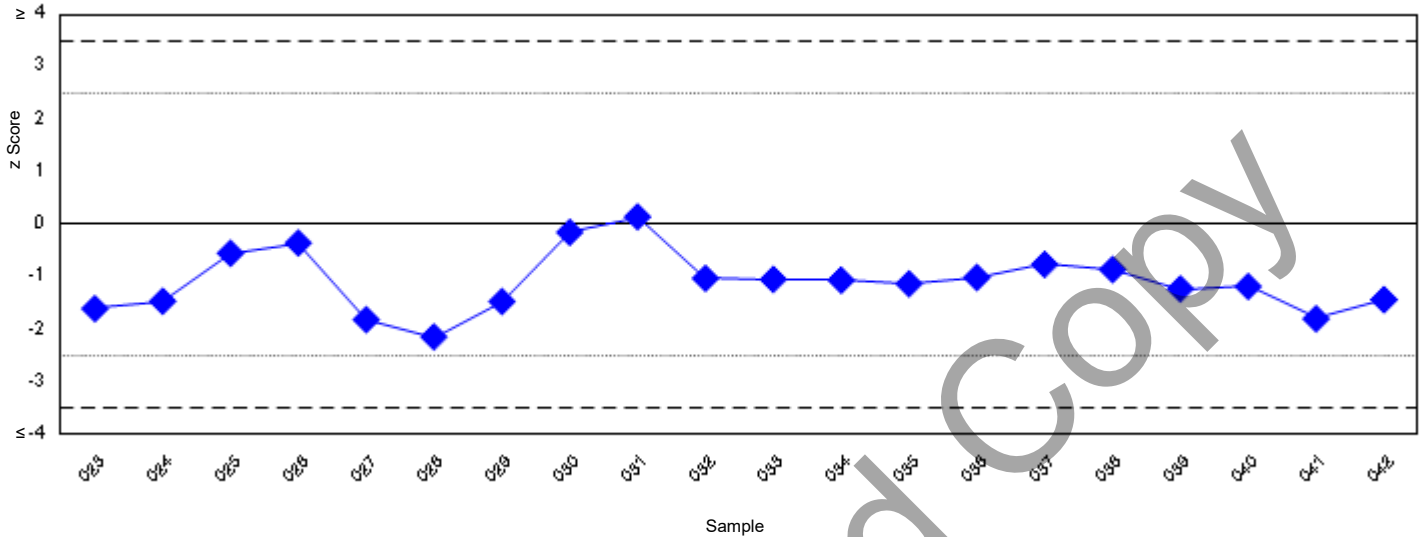


Minimal Residual Disease for CLL by Flow Cytometry (Not Accredited) Programme

Shewhart Control Charts

(Please note each data point represents a single sample)

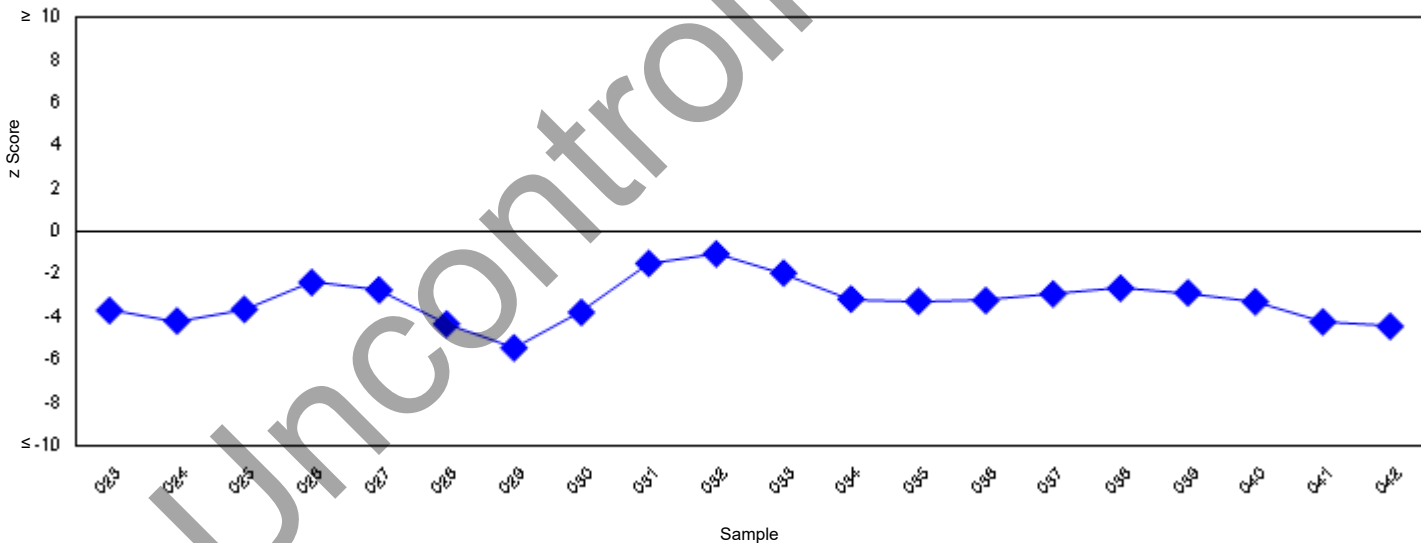
Values (Percentage MRD Population)



Cusum Control Charts

(Please note each data point represents the sum of the z scores of the current sample and the two previous samples)

Values (Percentage MRD Population)



Minimal Residual Disease for CLL by Flow Cytometry (Not Accredited) Programme**Flow Cytometer Specific Statistics**

(Please note only groups of >0 returns are displayed)

Method	Count Values (%)		
	Returns	Robust Mean	Robust SD
DxFLEX	1	0.0020	0.0000
FACSCanto II	25	0.0630	0.0243
FACSLyric	8	0.0640	0.0291
FC-500	1	0.0730	0.0000
Gallios	1	0.0500	0.0000
LSR	1	0.0870	0.0000
LSRFortessa	1	0.0300	0.0000
Navios	15	0.0480	0.0326

MRD Group Specific Statistics

(Please note only groups of >0 returns are displayed)

Method	Count Values (%)		
	Returns	Robust Mean	Robust SD
ERIC	5	0.0586	0.0109
Not-Affiliated	44	0.0595	0.0302
Other	4	0.0404	0.0270