

Immune Monitoring Programme
All Participant Report

Distribution - 252603

Sample - 406

Participant ID -

Date Issued - 02 December 2025

Closing Date - 31 December 2025

Machine Used -

Trial Comments

This exercise was issued to 822 participants of which 584 (71%) returned results within the trial window. Of the non-returning centres, there were 10 pre-notified non-returns but there were no extension requests at the time of report production

Sample Comments

This sample was made by UK NEQAS LI using stabilised whole blood

Absolute Values Results and Performance

Cell Population	Your Results (cells/ μ L)	Robust Mean (cells/ μ L)	Robust SD (cells/ μ L)	Uncertainty of the Assigned Value (Robust Mean)
CD3+ Lymphocytes		1239.61	112.39	± 7.85
CD3+/CD4+ Lymphocytes		855.54	80.67	± 5.53
CD3+/CD8+ Lymphocytes		339.34	34.61	± 2.46
CD19+ Lymphocytes		129.42	17.06	± 1.27
CD16+/CD56+ Lymphocytes		162.93	19.05	± 1.44

Cell Population	z Score*	Performance Status for this Sample	Performance Status Classification Over 12 Sample Period		
			Satisfactory	Action	Critical
CD3+ Lymphocytes	-0.30	Satisfactory	12	0	0
CD3+/CD4+ Lymphocytes	-1.01	Satisfactory	12	0	0
CD3+/CD8+ Lymphocytes	-0.59	Satisfactory	12	0	0
CD19+ Lymphocytes	1.21	Satisfactory	12	0	0
CD16+/CD56+ Lymphocytes	0.58	Satisfactory	12	0	0

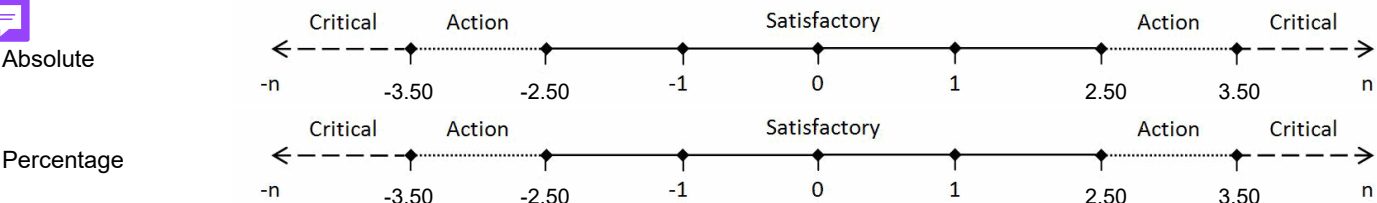
Percentage Values Results and Performance

Cell Population	Your Results %	Robust Mean %	Robust SD %	Uncertainty of the Assigned Value (Robust Mean)
CD3+ Lymphocytes		80.21	1.17	± 0.08
CD3+/CD4+ Lymphocytes		55.69	1.25	± 0.08
CD3+/CD8+ Lymphocytes		21.96	1.03	± 0.07
CD19+ Lymphocytes		8.28	0.67	± 0.05
CD16+/CD56+ Lymphocytes		10.50	0.70	± 0.05

Cell Population	z Score*	Performance Status for this Sample	Performance Status Classification Over 12 Sample Period		
			Satisfactory	Action	Critical
CD3+ Lymphocytes	-0.59	Satisfactory	12	0	0
CD3+/CD4+ Lymphocytes	-0.79	Satisfactory	12	0	0
CD3+/CD8+ Lymphocytes	0.55	Satisfactory	12	0	0
CD19+ Lymphocytes	1.48	Satisfactory	11	1	0
CD16+/CD56+ Lymphocytes	0.37	Satisfactory	12	0	0

***z Score Limits Definitions**

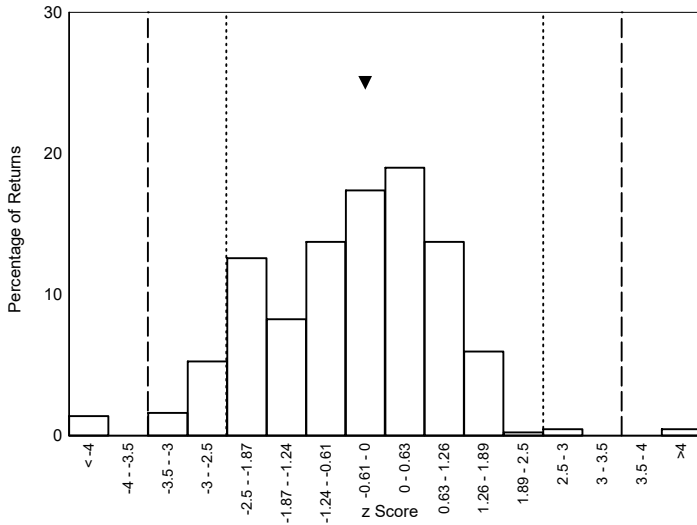
Please note the scale below is applicable to the tables above and to the z score histograms and Shewhart control charts that follow. It is not applicable to the Cusum control charts.



Histograms of Participant z Scores

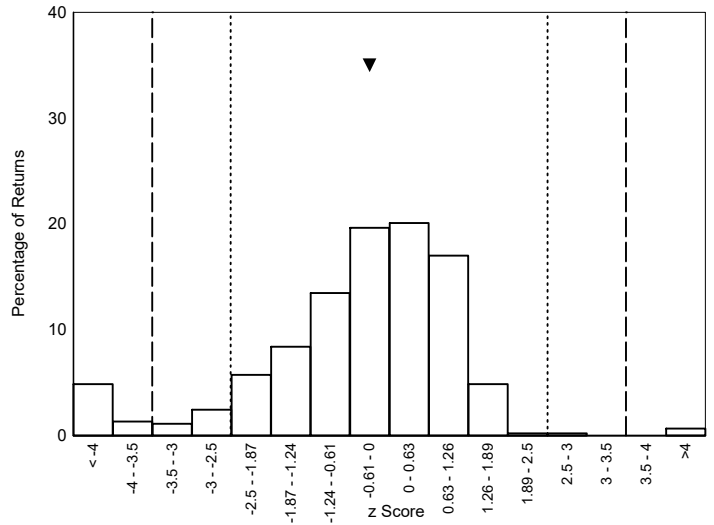
Absolute Values (cells/ μ L) - CD3+ Lymphocytes

Please note ▼ denotes your result



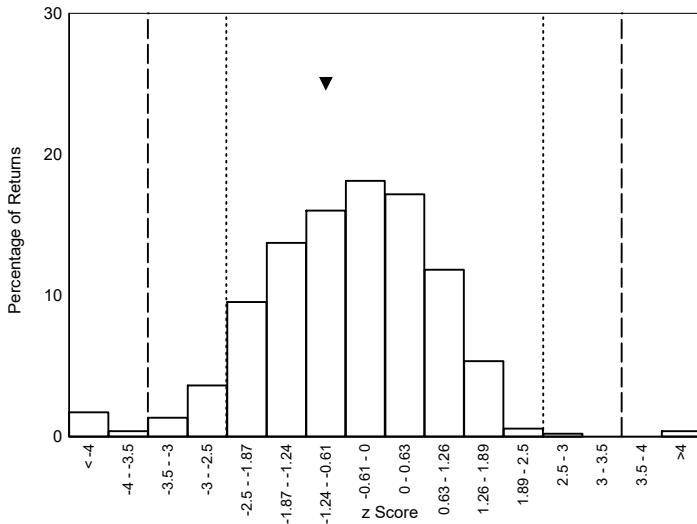
Percentage Values (%) - CD3+ Lymphocytes

Please note ▼ denotes your result



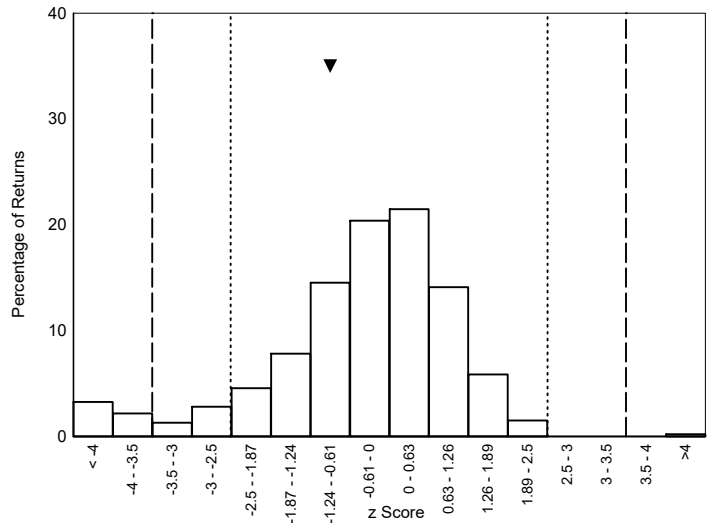
Absolute Values (cells/ μ L) - CD3+/CD4+ Lymphocytes

Please note ▼ denotes your result



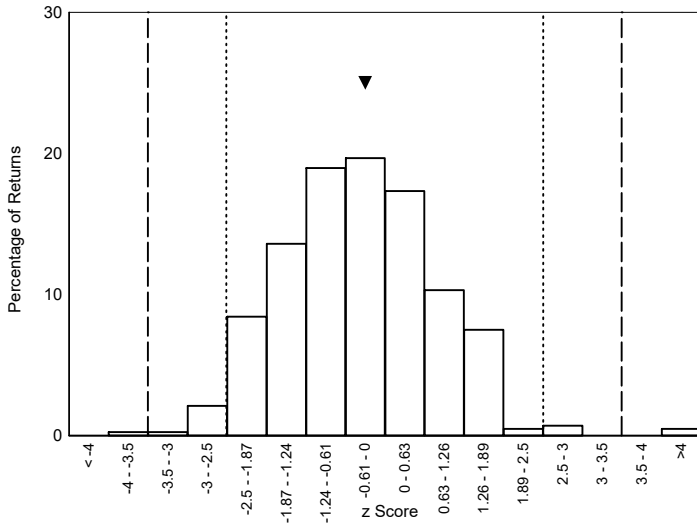
Percentage Values (%) - CD3+/CD4+ Lymphocytes

Please note ▼ denotes your result



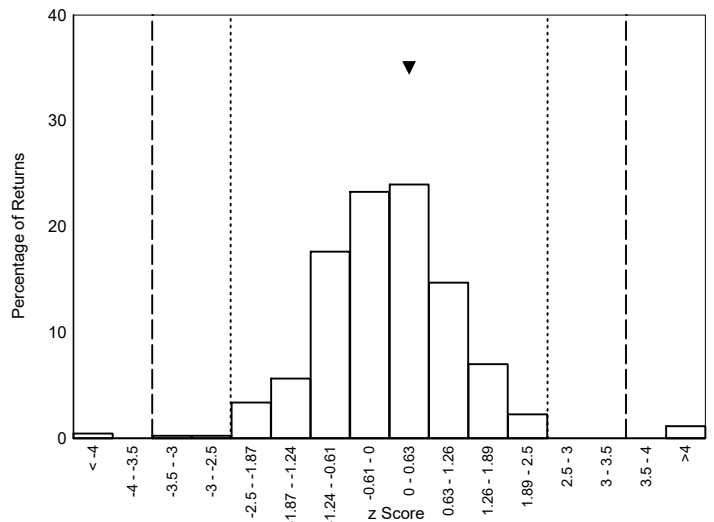
Absolute Values (cells/ μ L) - CD3+/CD8+ Lymphocytes

Please note ▼ denotes your result



Percentage Values (%) - CD3+/CD8+ Lymphocytes

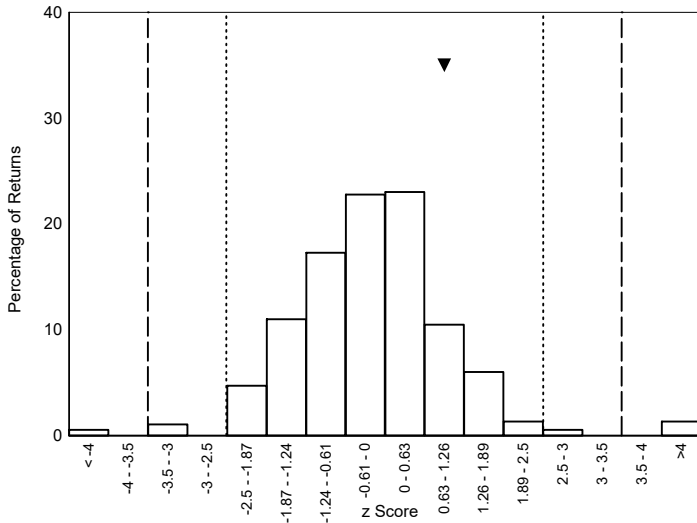
Please note ▼ denotes your result



Histograms of Participant z Scores

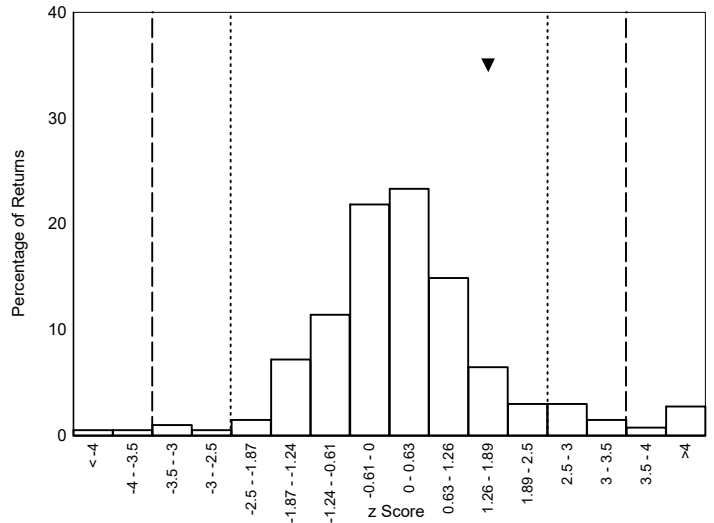
Absolute Values (cells/ μ L) - CD19+ Lymphocytes

Please note ▼ denotes your result



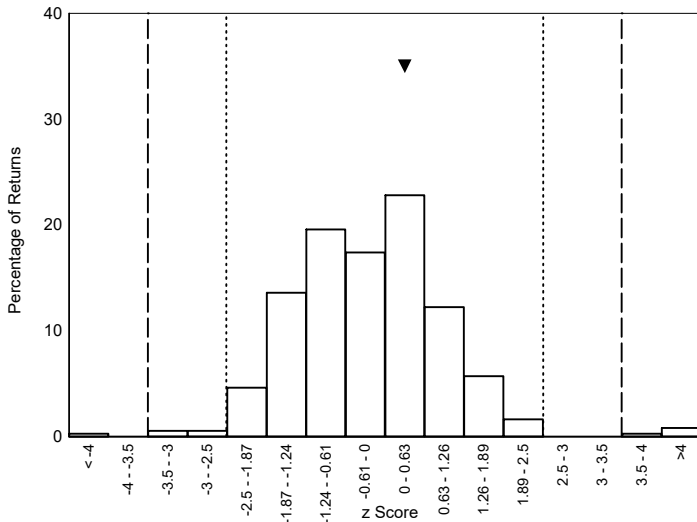
Percentage Values (%) - CD19+ Lymphocytes

Please note ▼ denotes your result



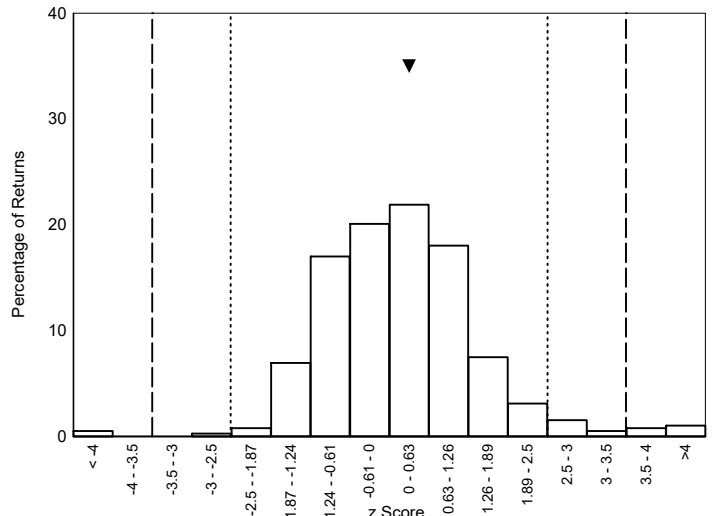
Absolute Values (cells/ μ L) - CD16+/CD56+ Lymphocytes

Please note ▼ denotes your result




Percentage Values (%) - CD16+/CD56+ Lymphocytes

Please note ▼ denotes your result

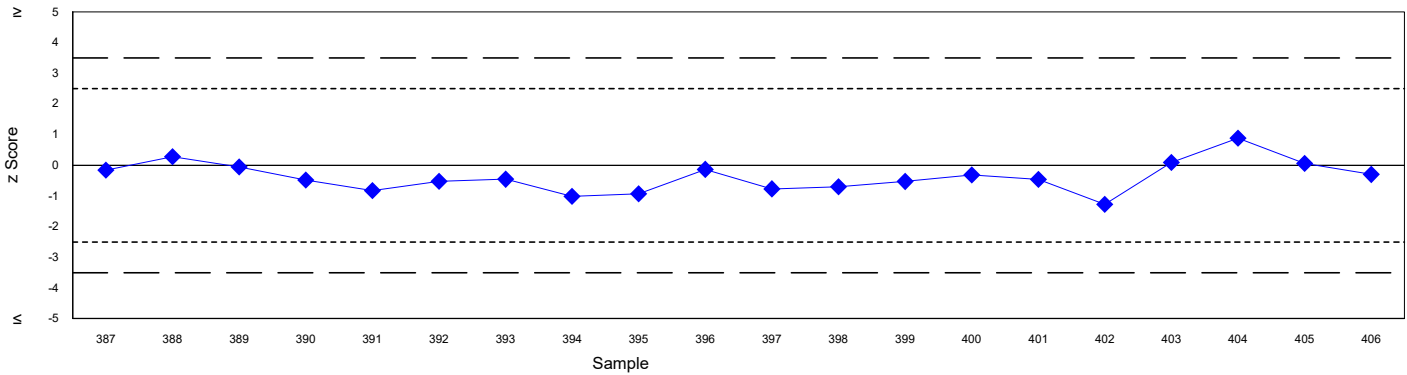


Shewhart Control Charts

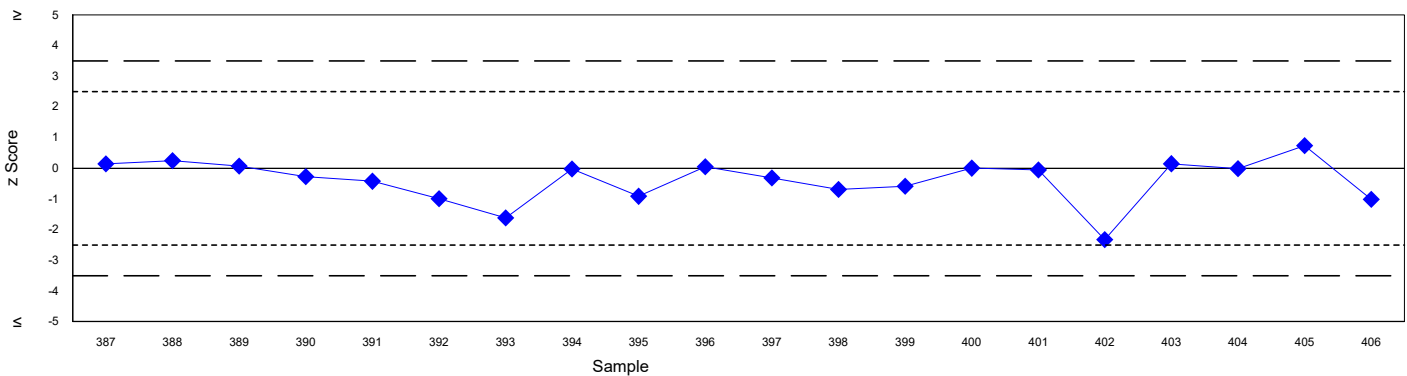
(Please note each data point represents  single sample)

Absolute Values (cells/ μ L)

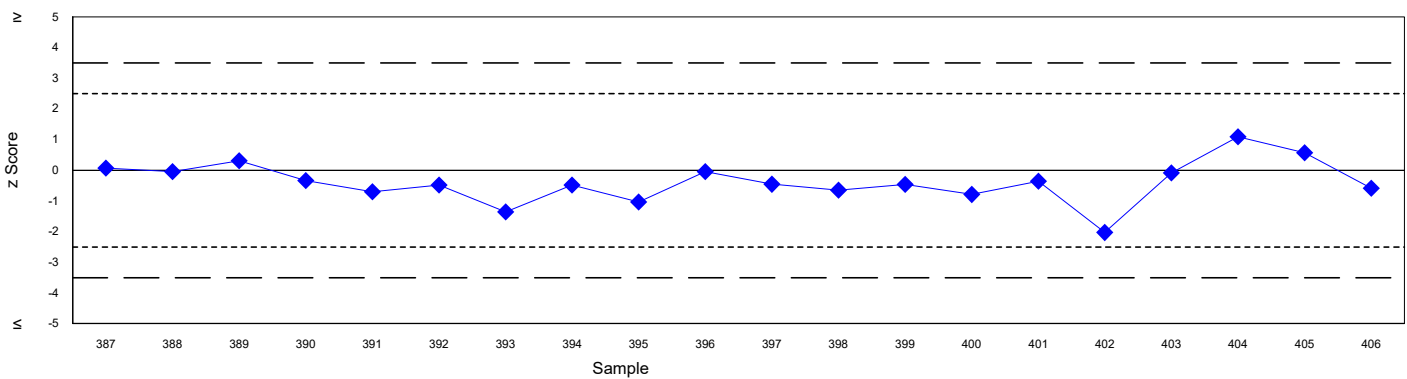
CD3+ Lymphocytes



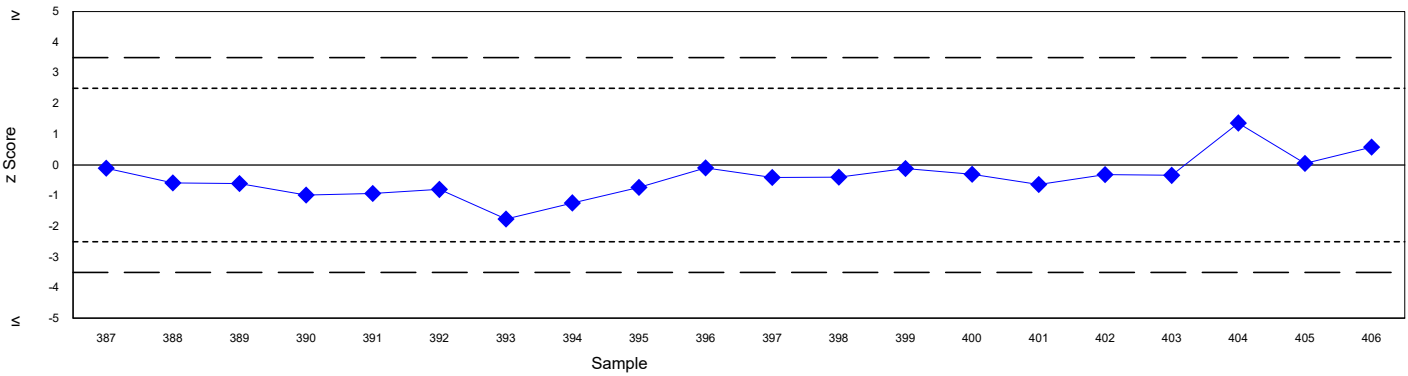
CD3+/CD4+ Lymphocytes



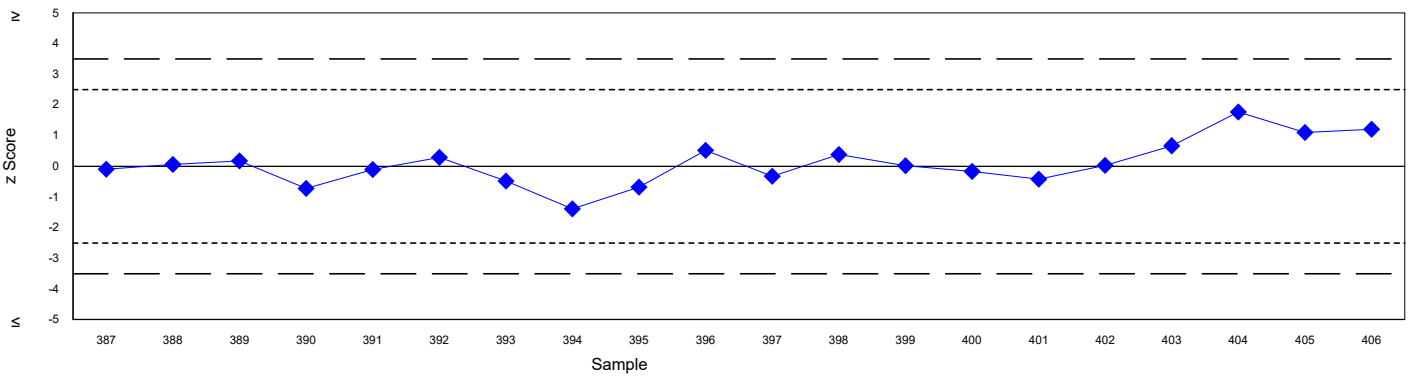
CD3+/CD8+ Lymphocytes



CD16+/CD56+ Lymphocytes



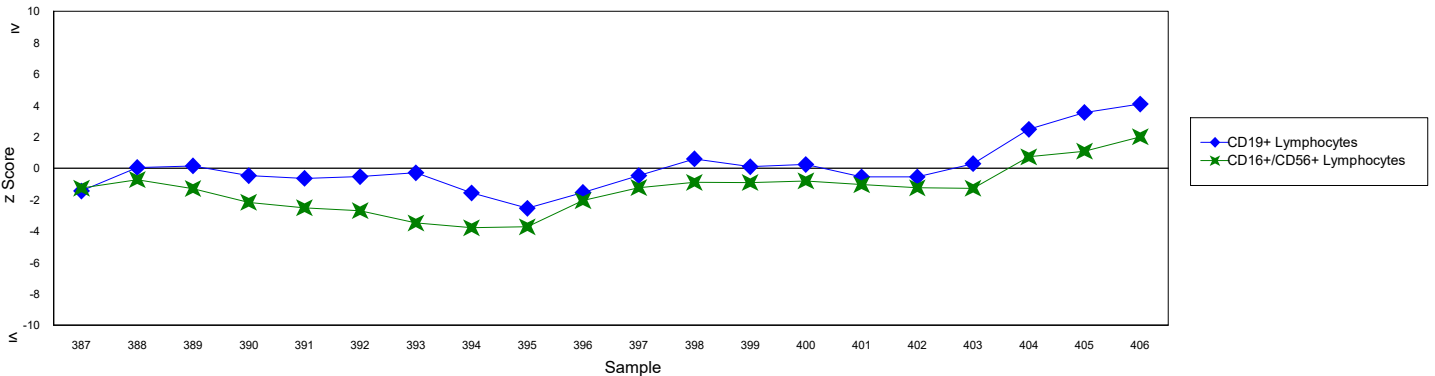
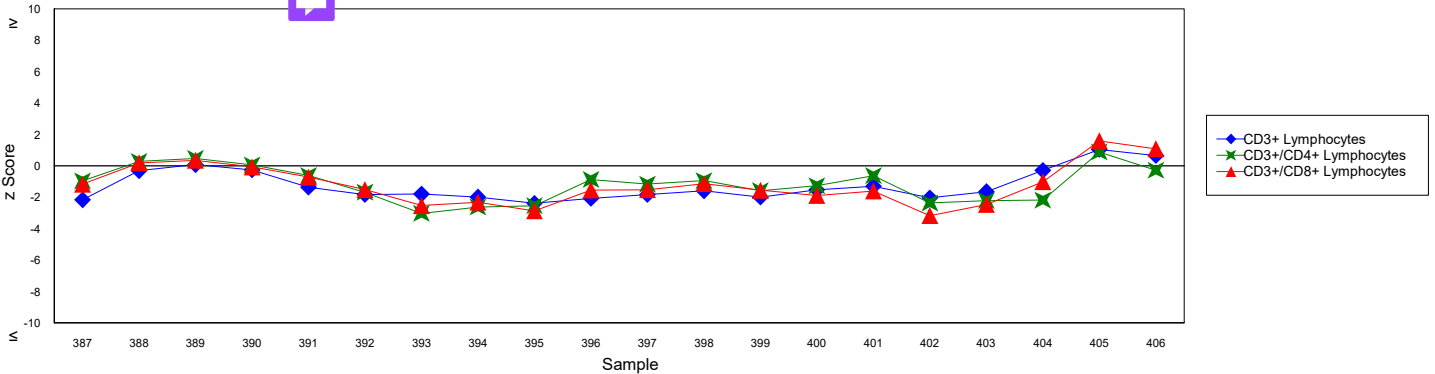
CD19+ Lymphocytes




Cusum Control Charts

(Please note each data point represents the sum of the z scores of the current sample and the two previous samples)

Absolute Values (cells/μL)

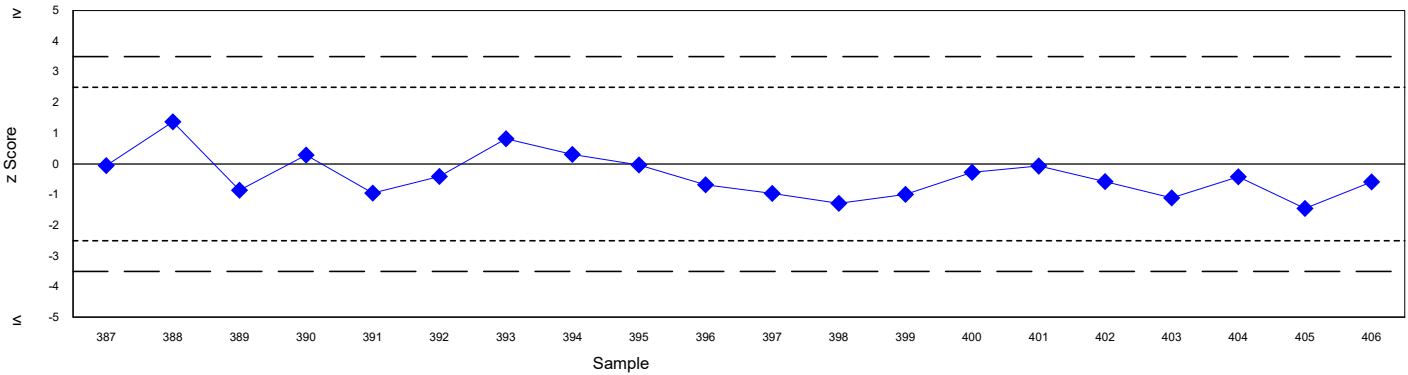


Shewhart Control Charts

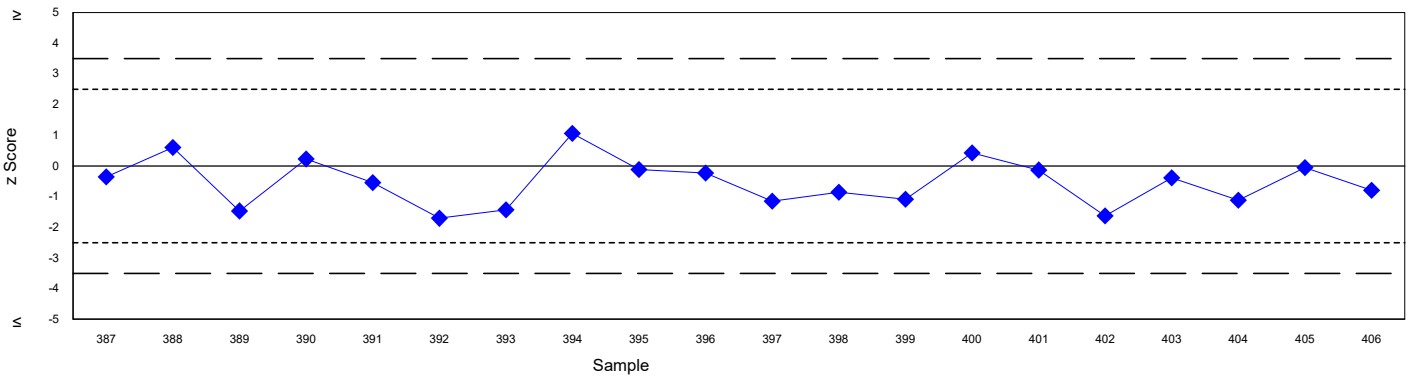
(Please note each data point represents  single sample)

Percentage Values (%)

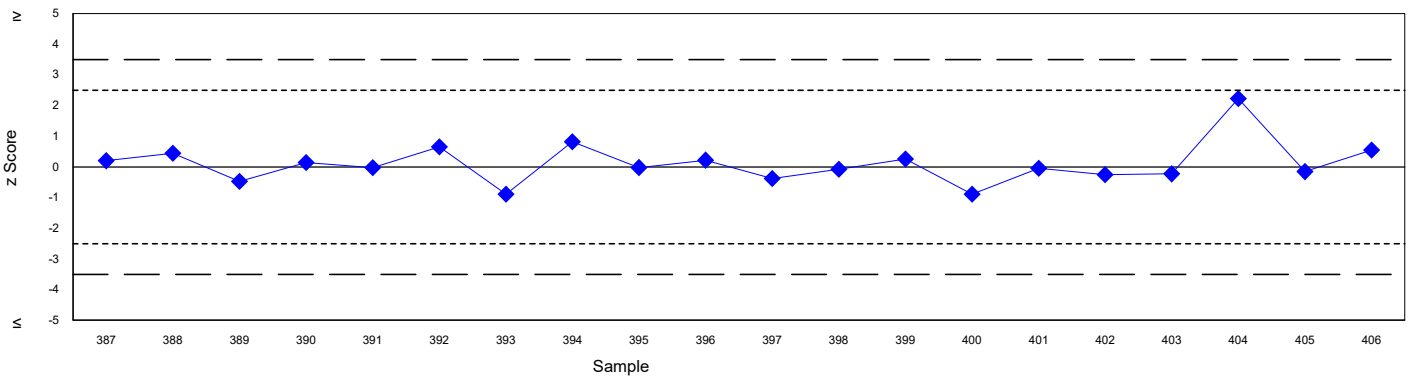
CD3+ Lymphocytes



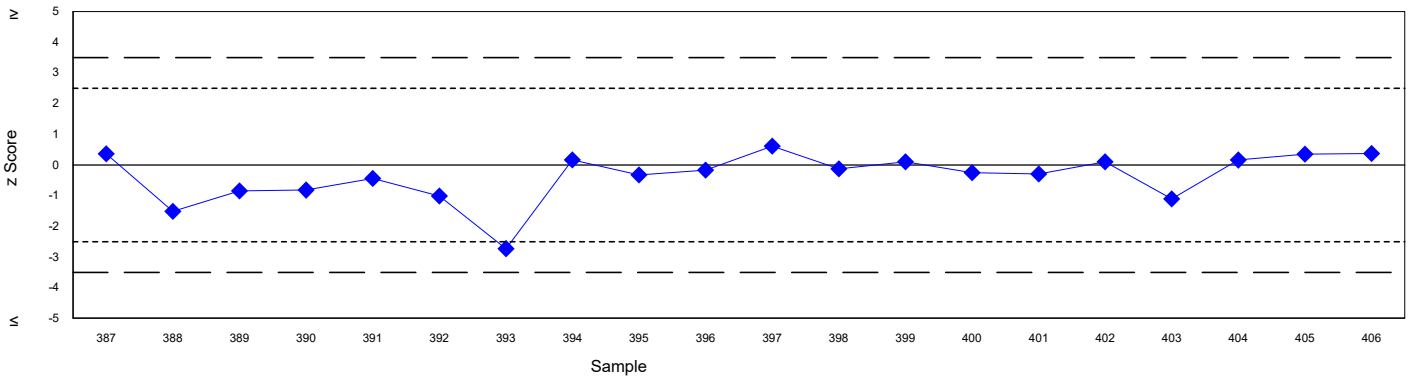
CD3+/CD4+ Lymphocytes



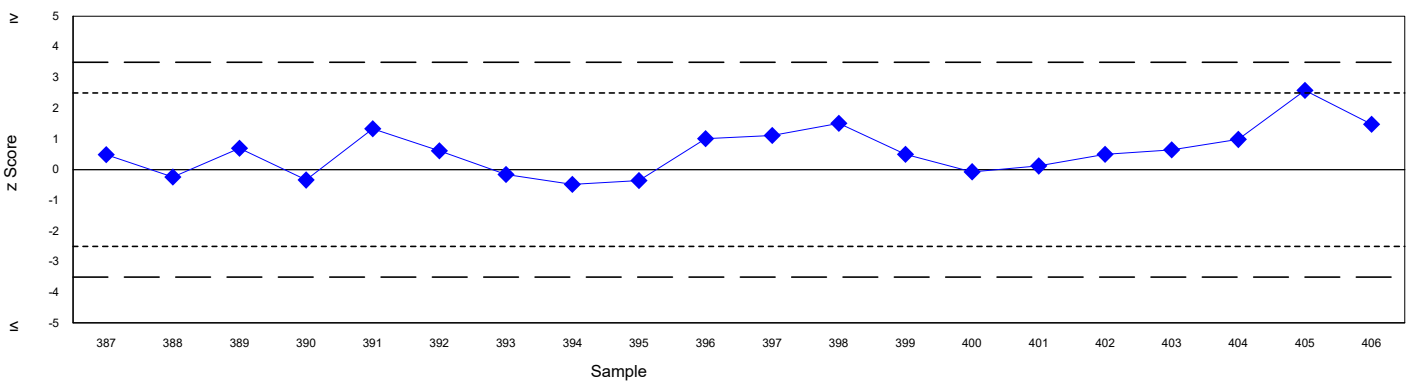
CD3+/CD8+ Lymphocytes



CD16+/CD56+ Lymphocytes



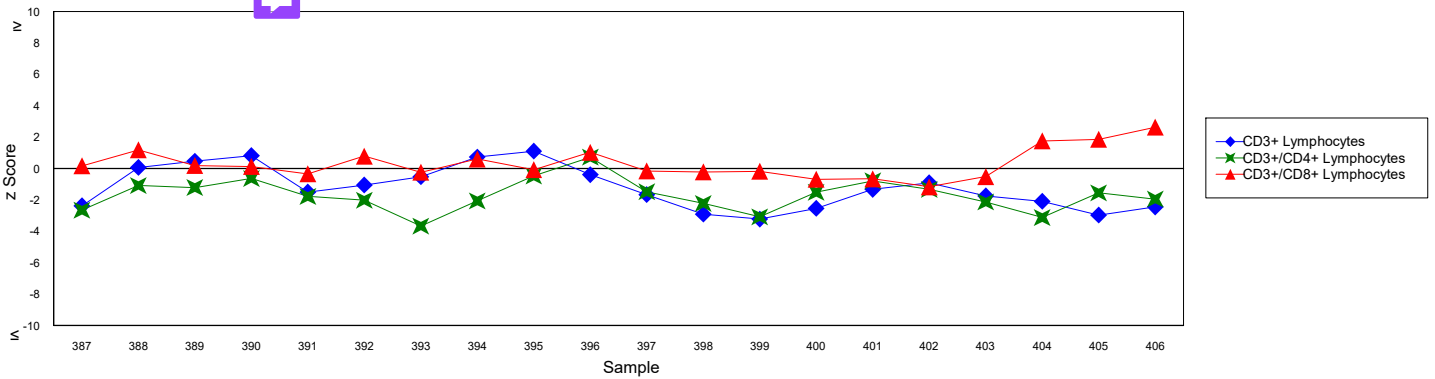
CD19+ Lymphocytes



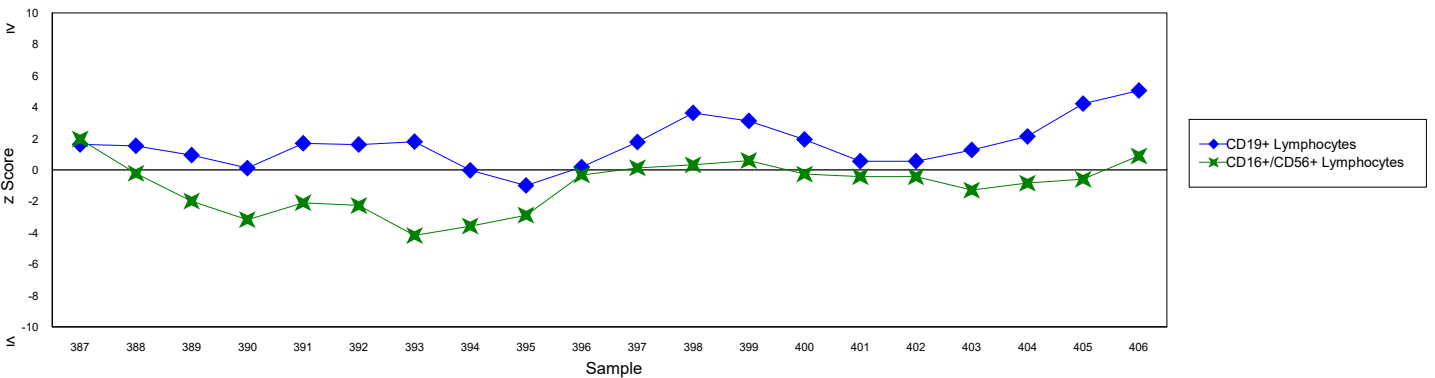
Cusum Control Charts

(Please note each data point represents the sum of the z scores of the current sample and the two previous samples)

Percentage Values (%)



Percentage Values (%)



Platform Specific Statistics 

(Please note only groups of >=20 returns are displayed)

Method	Absolute Count Values (cells/ μ L)			Percentage Values		
	Returns	Robust Mean	Robust SD	Returns	Robust Mean	Robust SD
FLOW COUNT	79	1163.0	79.4	75	80.4	1.1
HAEM. WBC	19	1197.4	116.9	25	80.2	1.1
TRUCOUNT	214	1277.5	96.8	210	80.1	1.2

Method	Absolute Count Values (cells/ μ L)			Percentage Values		
	Returns	Robust Mean	Robust SD	Returns	Robust Mean	Robust SD
FLOW COUNT	80	810.0	57.4	74	56.0	1.2
HAEM. WBC	18	826.8	84.7	24	55.5	1.7
TRUCOUNT	208	886.1	69.6	205	55.6	1.1

Method	Absolute Count Values (cells/ μ L)			Percentage Values		
	Returns	Robust Mean	Robust SD	Returns	Robust Mean	Robust SD
FLOW COUNT	75	320.4	24.0	71	22.1	0.9
HAEM. WBC	18	323.1	34.4	24	21.8	1.5
TRUCOUNT	207	348.9	33.0	204	21.9	1.1

Method	Absolute Count Values (cells/ μ L)			Percentage Values		
	Returns	Robust Mean	Robust SD	Returns	Robust Mean	Robust SD
FLOW COUNT	68	116.6	14.5	68	8.0	0.6
HAEM. WBC	17	116.4	17.8	23	7.9	0.7
TRUCOUNT	188	134.9	14.3	185	8.5	0.6

Method	Absolute Count Values (cells/ μ L)			Percentage Values		
	Returns	Robust Mean	Robust SD	Returns	Robust Mean	Robust SD
FLOW COUNT	65	151.6	18.6	65	10.5	0.8
HAEM. WBC	16	156.7	18.6	22	10.7	0.8
TRUCOUNT	189	167.5	16.4	186	10.5	0.7

Antibody Manufacturer Specific Statistics (Please note only groups of ≥ 20 returns are displayed)

Method	Absolute Count Values (cells/ μ L)			Percentage Values		
	Returns	Robust Mean	Robust SD	Returns	Robust Mean	Robust SD
BD Biosciences	232	1268.3	101.8	241	80.2	1.2
Beckman Coulter	103	1163.2	94.8	107	80.4	1.1

Method	Absolute Count Values (cells/ μ L)			Percentage Values		
	Returns	Robust Mean	Robust SD	Returns	Robust Mean	Robust SD
BD Biosciences	237	873.5	75.7	244	55.6	1.2
Beckman Coulter	101	813.9	66.7	104	56.1	1.1

Method	Absolute Count Values (cells/ μ L)			Percentage Values		
	Returns	Robust Mean	Robust SD	Returns	Robust Mean	Robust SD
BD Biosciences	228	345.2	34.0	239	21.9	1.1
Beckman Coulter	97	322.2	28.9	100	22.2	0.9

Method	Absolute Count Values (cells/ μ L)			Percentage Values		
	Returns	Robust Mean	Robust SD	Returns	Robust Mean	Robust SD
BD Biosciences	203	132.9	15.1	214	8.4	0.7
Beckman Coulter	94	117.6	16.3	102	8.0	0.6

Method	Absolute Count Values (cells/ μ L)			Percentage Values		
	Returns	Robust Mean	Robust SD	Returns	Robust Mean	Robust SD
BD Biosciences	204	166.1	16.5	216	10.5	0.7
Beckman Coulter	82	152.4	19.3	88	10.5	0.7

Antibody Fluorochrome Specific Statistics (Please note only groups of ≥ 20 returns are displayed)

Method	Absolute Count Values (cells/ μ L)			Percentage Values		
	Returns	Robust Mean	Robust SD	Returns	Robust Mean	Robust SD
FITC	235	1264.2	105.7	237	80.2	1.1
PC5	49	1162.8	106.5	48	80.6	1.1

Method	Absolute Count Values (cells/ μ L)			Percentage Values		
	Returns	Robust Mean	Robust SD	Returns	Robust Mean	Robust SD
APC	76	863.2	65.0	78	55.5	1.3
PE	35	795.0	46.9	37	55.9	1.2
PE-CY7	162	880.2	77.8	164	55.7	1.1
RD1	47	814.6	75.0	44	56.4	1.1

Method	Absolute Count Values (cells/ μ L)			Percentage Values		
	Returns	Robust Mean	Robust SD	Returns	Robust Mean	Robust SD
APC-Cy7	154	344.8	35.3	156	21.8	1.0
ECD	59	319.3	24.0	57	22.1	0.7
PE	71	347.5	30.0	74	22.1	1.1

Method	Absolute Count Values (cells/ μ L)			Percentage Values		
	Returns	Robust Mean	Robust SD	Returns	Robust Mean	Robust SD
APC	204	132.8	15.2	207	8.4	0.6
ECD	57	114.3	14.5	60	7.9	0.5

Method	Absolute Count Values (cells/ μ L)			Percentage Values		
	Returns	Robust Mean	Robust SD	Returns	Robust Mean	Robust SD
PE	241	163.5	18.7	253	10.5	0.7
RD1	28	152.3	17.3	28	10.5	0.7

Flow Cytometer Specific Statistics

(Please note only groups of >=20 returns are displayed)

Method	Absolute Count Values (cells/ μ L)			Percentage Values		
	Returns	Robust Mean	Robust SD	Returns	Robust Mean	Robust SD
DxFLEX	41	1166.0	129.9	42	80.2	1.1
FACSCanto II	59	1250.1	102.2	65	79.9	1.5
FACSLyric	156	1274.9	106.9	159	80.3	1.0
Navios	69	1182.3	89.4	72	80.4	1.1

Method	Absolute Count Values (cells/ μ L)			Percentage Values		
	Returns	Robust Mean	Robust SD	Returns	Robust Mean	Robust SD
DxFLEX	40	816.4	81.8	40	55.7	1.1
FACSCanto II	56	875.0	72.8	62	55.8	1.2
FACSLyric	153	883.2	77.0	157	55.7	1.2
Navios	68	826.3	66.6	71	56.2	1.1

Method	Absolute Count Values (cells/ μ L)			Percentage Values		
	Returns	Robust Mean	Robust SD	Returns	Robust Mean	Robust SD
DxFLEX	40	322.5	35.9	40	22.1	1.1
FACSCanto II	56	344.5	38.7	62	22.0	1.2
FACSLyric	152	346.9	33.8	156	21.8	1.0
Navios	65	325.9	27.9	68	22.2	0.8

Method	Absolute Count Values (cells/ μ L)			Percentage Values		
	Returns	Robust Mean	Robust SD	Returns	Robust Mean	Robust SD
DxFLEX	36	118.4	13.6	39	8.1	0.7
FACSCanto II	51	132.5	18.6	56	8.4	0.8
FACSLyric	142	133.3	14.9	148	8.4	0.6
Navios	63	120.1	18.5	66	8.0	0.6

Method	Absolute Count Values (cells/ μ L)			Percentage Values		
	Returns	Robust Mean	Robust SD	Returns	Robust Mean	Robust SD
DxFLEX	29	149.0	13.3	32	10.4	0.7
FACSCanto II	51	168.8	19.8	55	10.8	0.8
FACSLyric	141	165.4	16.2	147	10.4	0.6
Navios	59	156.5	21.5	62	10.5	0.8

Gating Strategy Specific Statistics

(Please note only groups of >=20 returns are displayed)

Method	Absolute Count Values (cells/ μ L)			Percentage Values		
	Returns	Robust Mean	Robust SD	Returns	Robust Mean	Robust SD
CD45/SSC	318	1234.0	116.3	333	80.2	1.2

Method	Absolute Count Values (cells/ μ L)			Percentage Values		
	Returns	Robust Mean	Robust SD	Returns	Robust Mean	Robust SD
CD45/SSC	317	857.6	77.8	331	55.7	1.2

Method	Absolute Count Values (cells/ μ L)			Percentage Values		
	Returns	Robust Mean	Robust SD	Returns	Robust Mean	Robust SD
CD45/SSC	315	337.4	35.2	329	22.0	1.0

Method	Absolute Count Values (cells/ μ L)			Percentage Values		
	Returns	Robust Mean	Robust SD	Returns	Robust Mean	Robust SD
CD45/SSC	291	128.2	17.8	309	8.3	0.7

Method	Absolute Count Values (cells/ μ L)			Percentage Values		
	Returns	Robust Mean	Robust SD	Returns	Robust Mean	Robust SD
CD45/SSC	281	162.0	18.8	298	10.5	0.7

Immune Monitoring Programme
All Participant Report

Distribution - 252603

Sample - 407

Participant ID -

Date Issued - 02 December 2025

Closing Date - 31 December 2025

Machine Used -

Trial Comments

This exercise was issued to 822 participants of which 584 (71%) returned results within the trial window. Of the non-returning centres, there were 10 pre-notified non-returns but there were no extension requests at the time of report production.

Sample Comments

This sample was made by UK NEQAS LI using stabilised blood and blood artificially depleted of CD3+/CD4+ lymphocytes.

Absolute Values Results and Performance

Cell Population	Your Results (cells/ μ L)	Robust Mean (cells/ μ L)	Robust SD (cells/ μ L)	Uncertainty of the Assigned Value (Robust Mean)
CD3+ Lymphocytes		460.07	41.00	± 2.87
CD3+/CD4+ Lymphocytes		196.64	18.10	± 1.24
CD3+/CD8+ Lymphocytes		228.72	22.13	± 1.57
CD19+ Lymphocytes		61.96	8.26	± 0.61
CD16+/CD56+ Lymphocytes		66.97	7.61	± 0.58

Cell Population	z Score*	Performance Status for this Sample	Performance Status Classification Over 12 Sample Period		
			Satisfactory	Action	Critical
CD3+ Lymphocytes	-0.37	Satisfactory	12	0	0
CD3+/CD4+ Lymphocytes	-0.59	Satisfactory	12	0	0
CD3+/CD8+ Lymphocytes	-0.12	Satisfactory	12	0	0
CD19+ Lymphocytes	0.85	Satisfactory	12	0	0
CD16+/CD56+ Lymphocytes	-0.52	Satisfactory	12	0	0

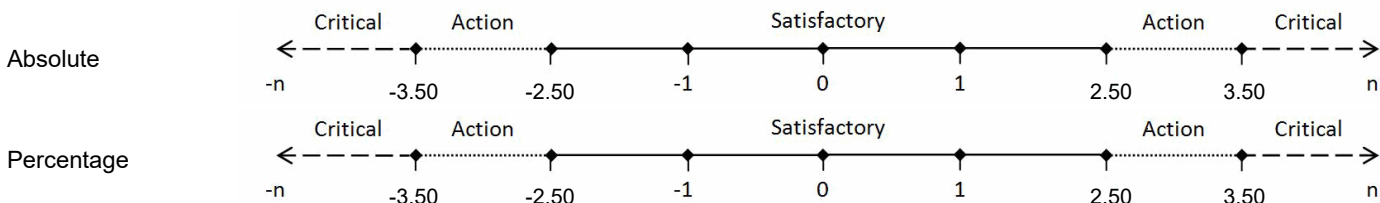
Percentage Values Results and Performance

Cell Population	Your Results %	Robust Mean %	Robust SD %	Uncertainty of the Assigned Value (Robust Mean)
CD3+ Lymphocytes		77.45	1.37	± 0.09
CD3+/CD4+ Lymphocytes		33.26	1.18	± 0.08
CD3+/CD8+ Lymphocytes		38.40	1.35	± 0.09
CD19+ Lymphocytes		10.21	0.92	± 0.06
CD16+/CD56+ Lymphocytes		11.14	0.81	± 0.06

Cell Population	z Score*	Performance Status for this Sample	Performance Status Classification Over 12 Sample Period		
			Satisfactory	Action	Critical
CD3+ Lymphocytes	-0.85	Satisfactory	12	0	0
CD3+/CD4+ Lymphocytes	-0.56	Satisfactory	12	0	0
CD3+/CD8+ Lymphocytes	0.80	Satisfactory	12	0	0
CD19+ Lymphocytes	1.54	Satisfactory	11	1	0
CD16+/CD56+ Lymphocytes	-0.69	Satisfactory	12	0	0

***z Score Limits Definitions**

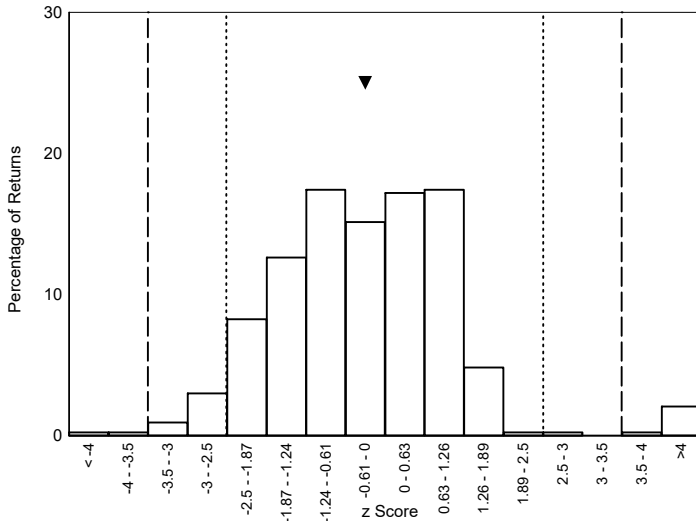
Please note the scale below is applicable to the tables above and to the z score histograms and Shewhart control charts that follow. It is not applicable to the Cusum control charts.



Histograms of Participant z Scores

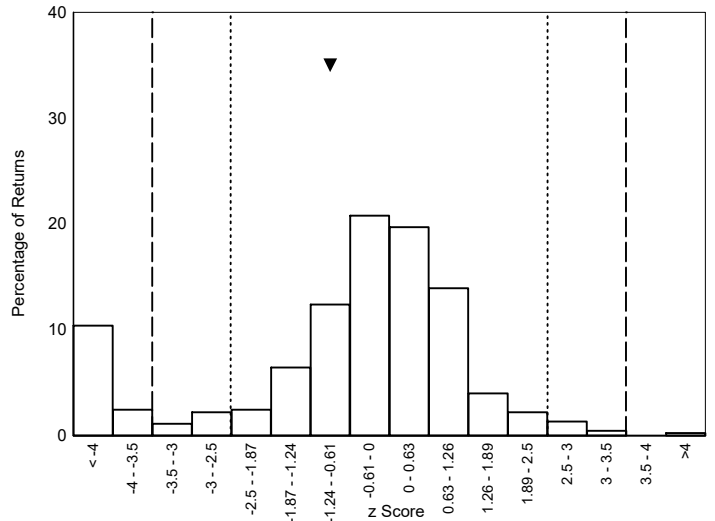
Absolute Values (cells/ μ L) - CD3+ Lymphocytes

Please note ▼ denotes your result



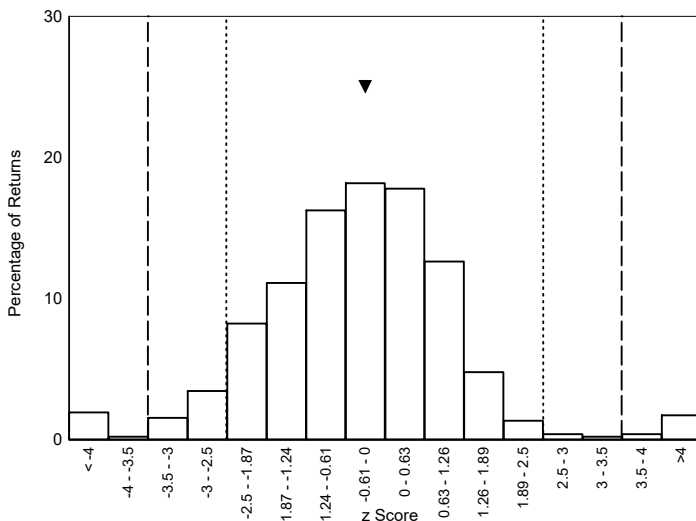
Percentage Values (%) - CD3+ Lymphocytes

Please note ▼ denotes your result



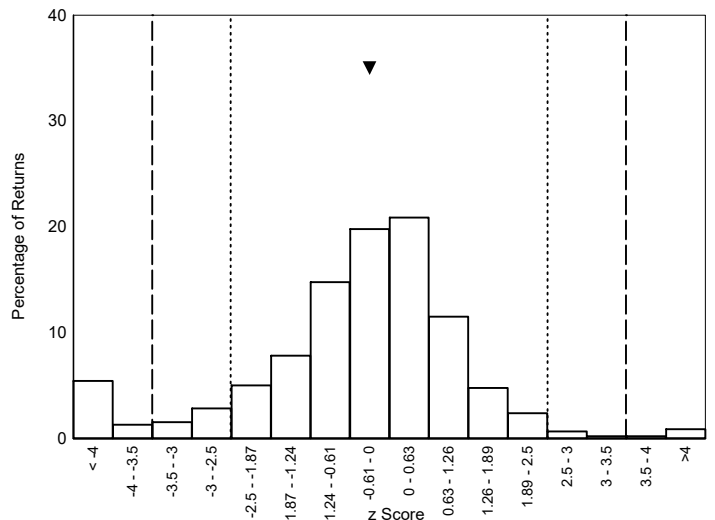
Absolute Values (cells/ μ L) - CD3+/CD4+ Lymphocytes

Please note ▼ denotes your result



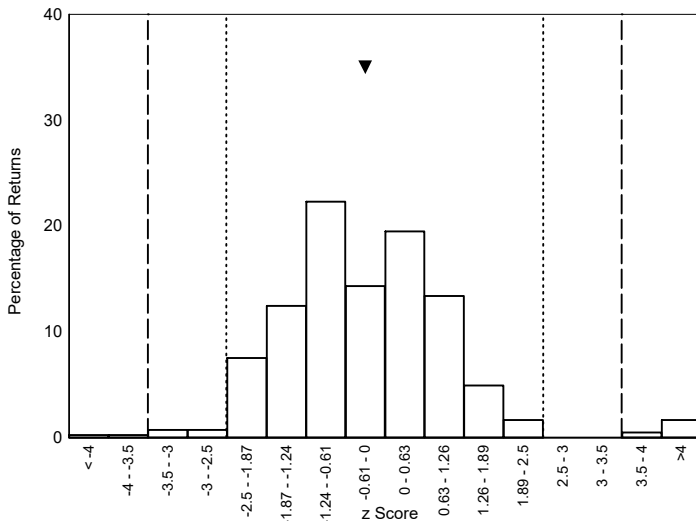
Percentage Values (%) - CD3+/CD4+ Lymphocytes

Please note ▼ denotes your result



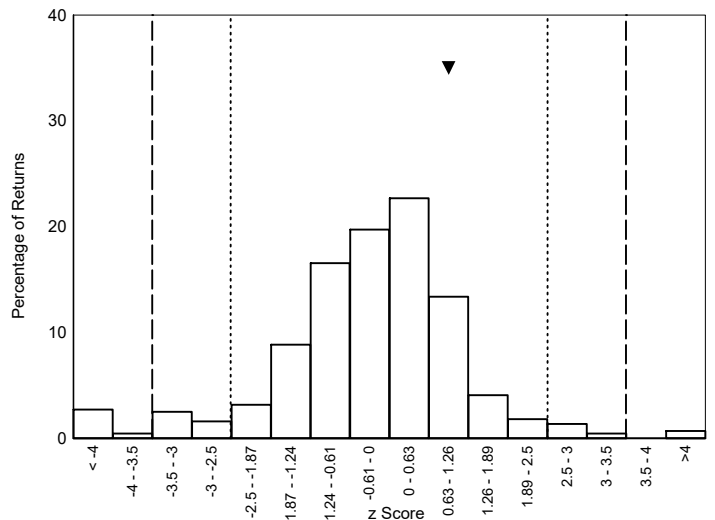
Absolute Values (cells/ μ L) - CD3+/CD8+ Lymphocytes

Please note ▼ denotes your result



Percentage Values (%) - CD3+/CD8+ Lymphocytes

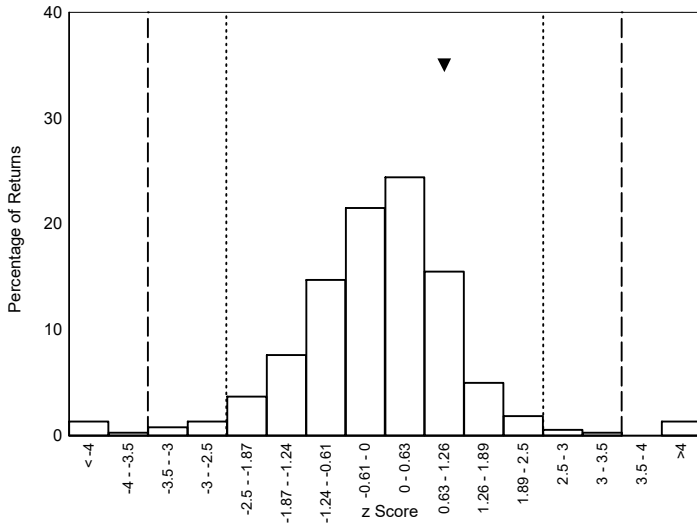
Please note ▼ denotes your result



Histograms of Participant z Scores

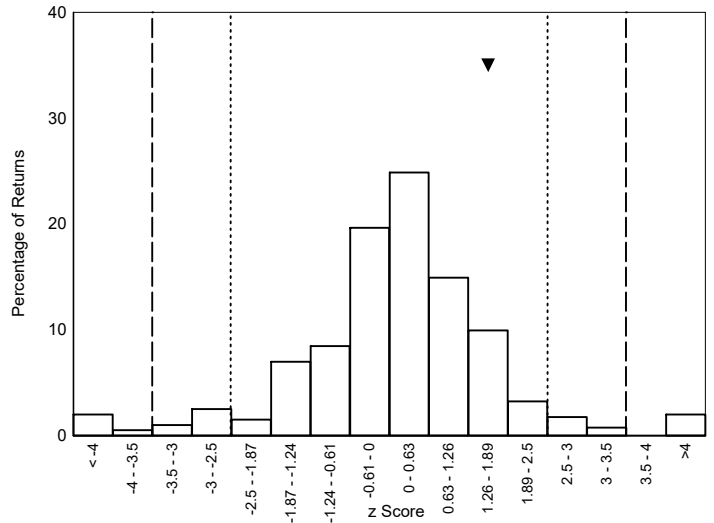
Absolute Values (cells/ μ L) - CD19+ Lymphocytes

Please note ▼ denotes your result



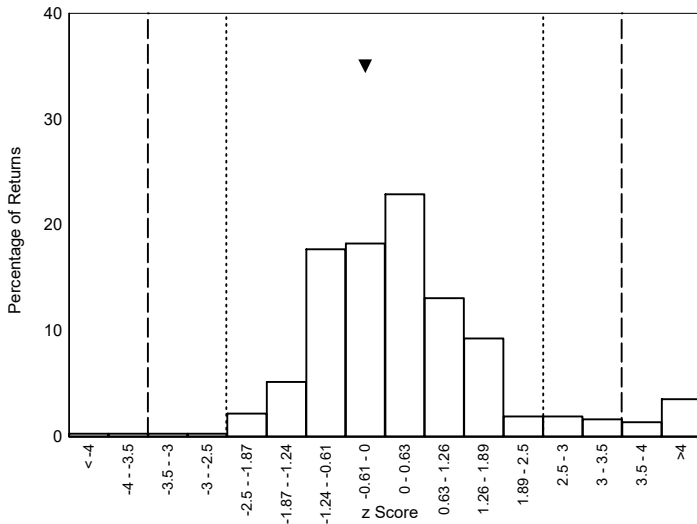
Percentage Values (%) - CD19+ Lymphocytes

Please note ▼ denotes your result



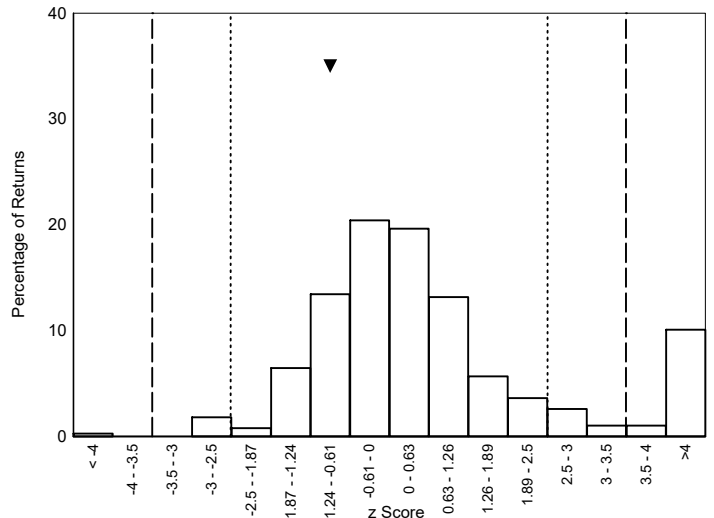
Absolute Values (cells/ μ L) - CD16+/CD56+ Lymphocytes

Please note ▼ denotes your result



Percentage Values (%) - CD16+/CD56+ Lymphocytes

Please note ▼ denotes your result

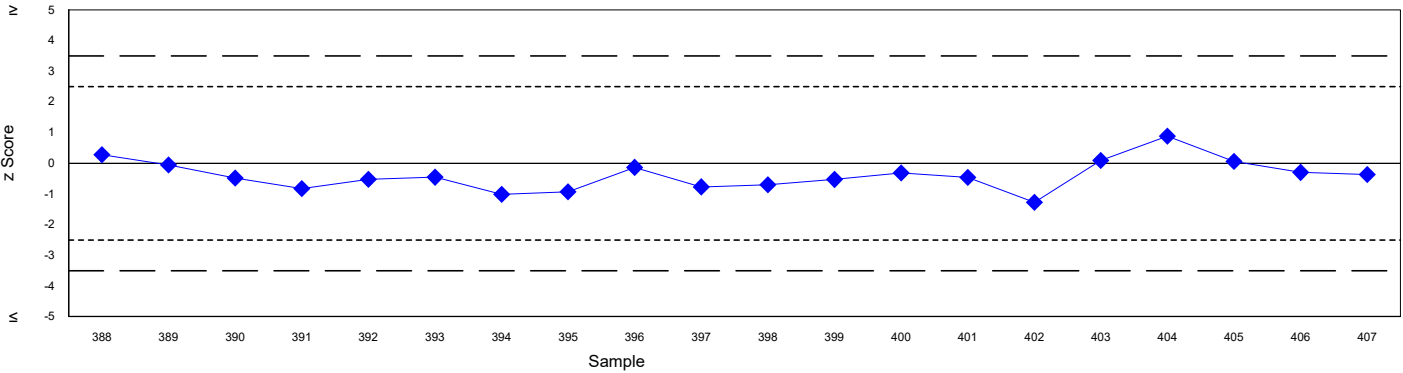


Shewhart Control Charts

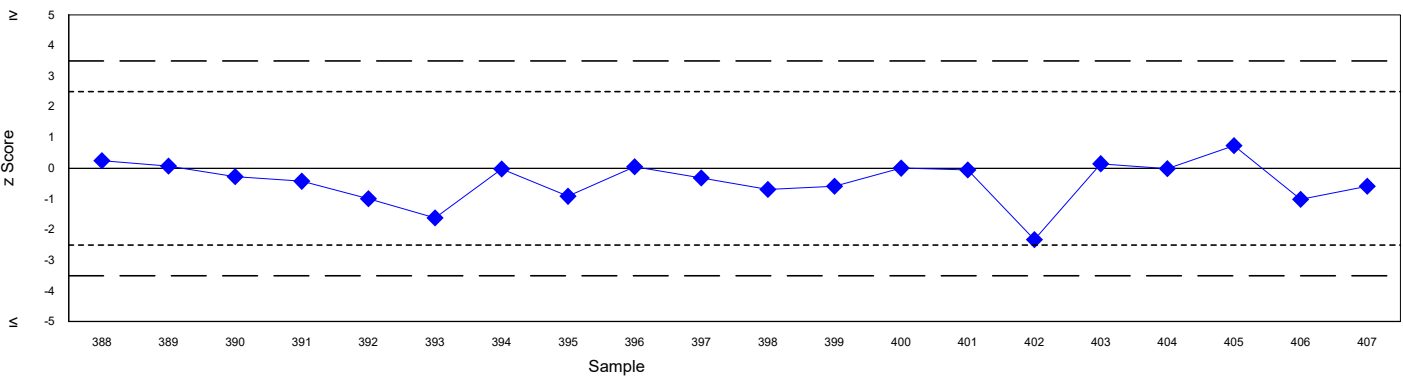
(Please note each data point represents a single sample)

Absolute Values (cells/ μ L)

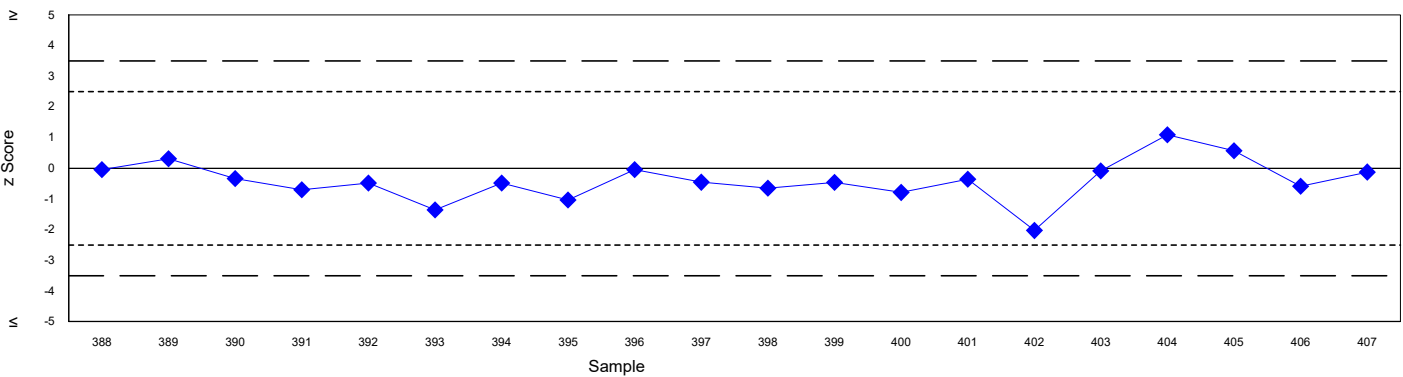
CD3+ Lymphocytes



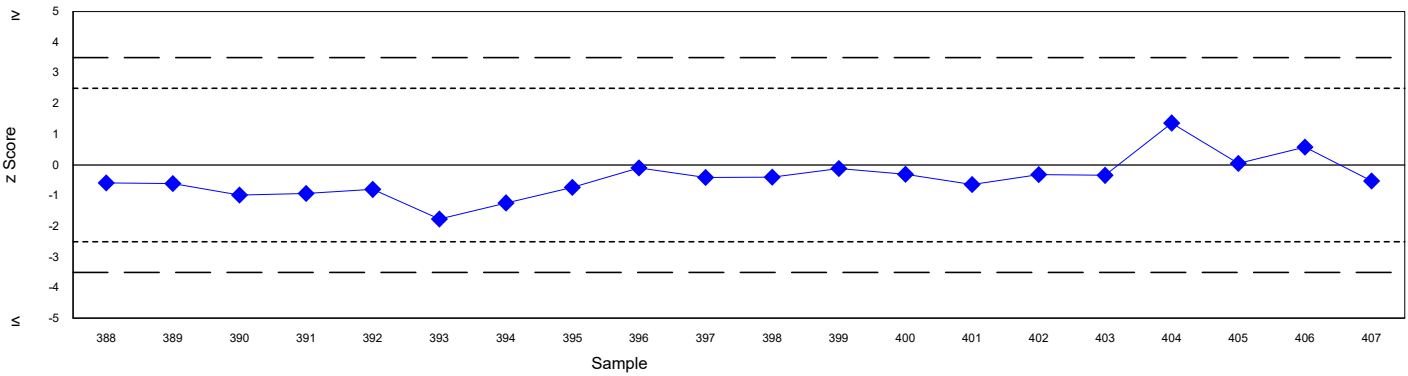
CD3+/CD4+ Lymphocytes



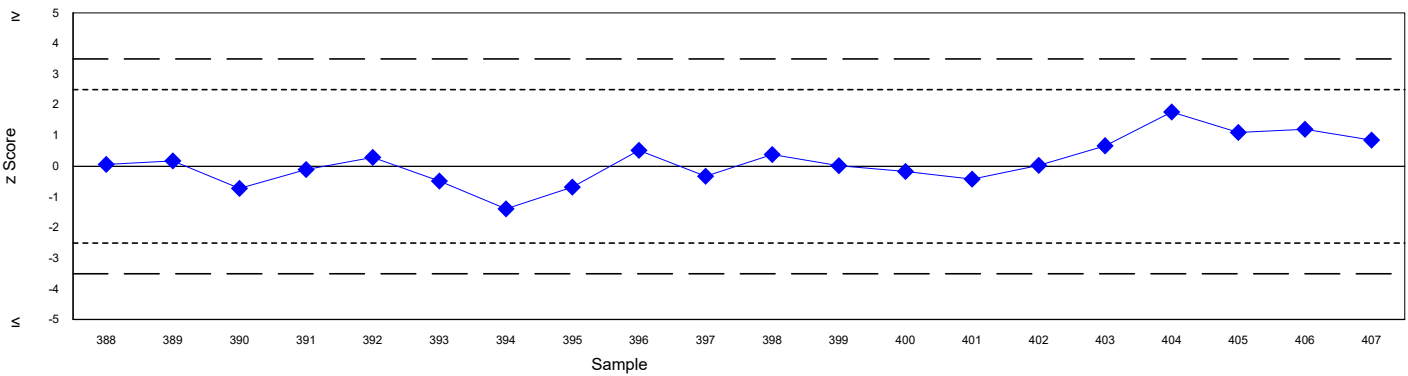
CD3+/CD8+ Lymphocytes



CD16+/CD56+ Lymphocytes



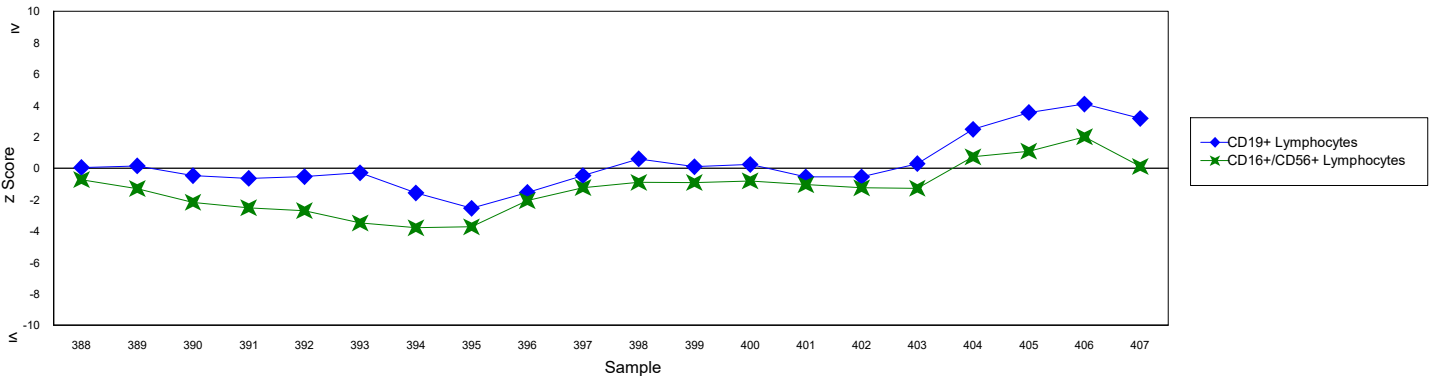
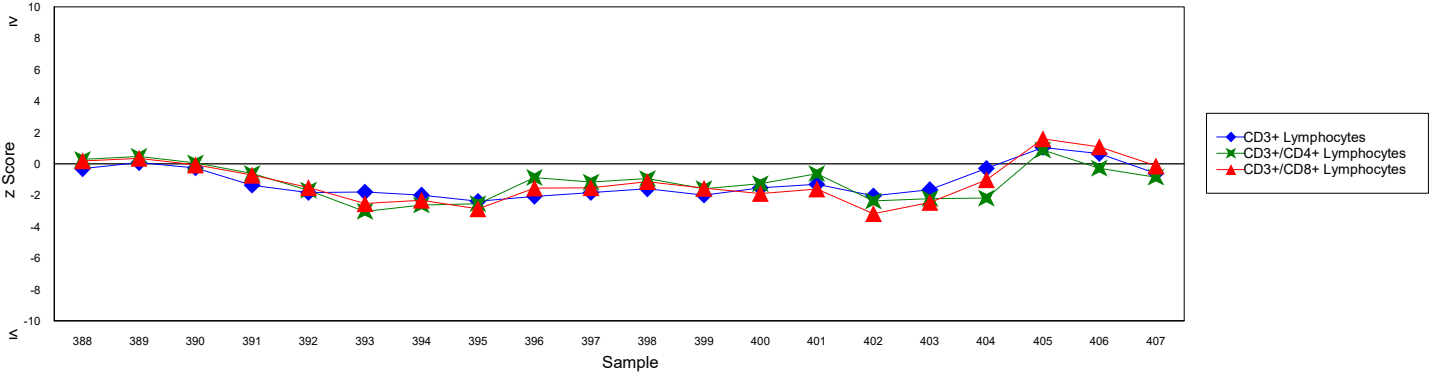
CD19+ Lymphocytes



Cusum Control Charts

(Please note each data point represents the sum of the z scores of the current sample and the two previous samples)

Absolute Values (cells/μL)

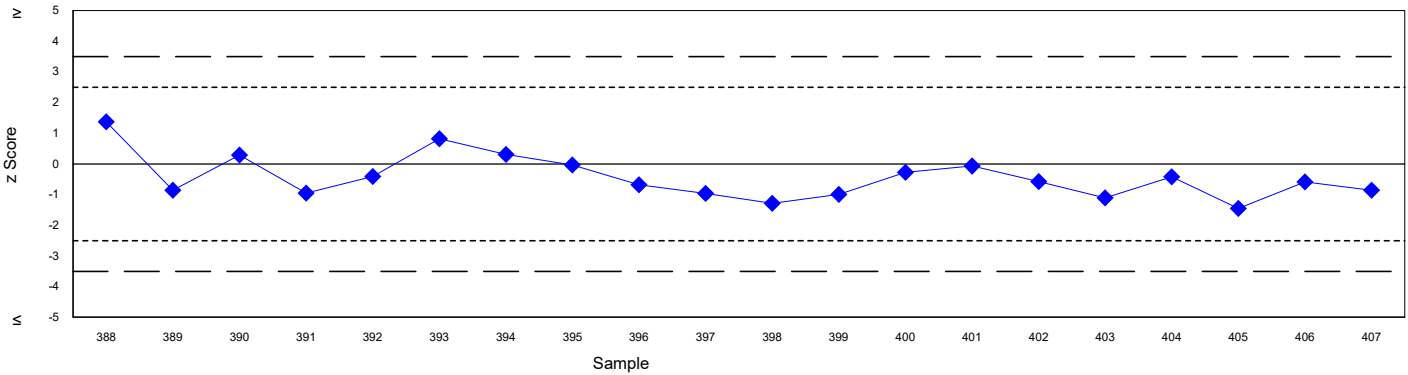


Shewhart Control Charts

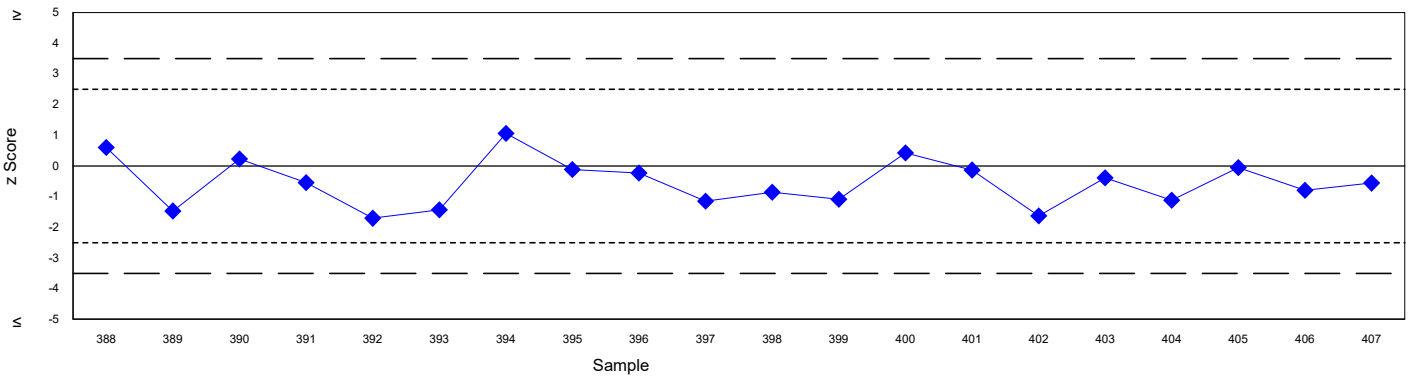
(Please note each data point represents a single sample)

Percentage Values (%)

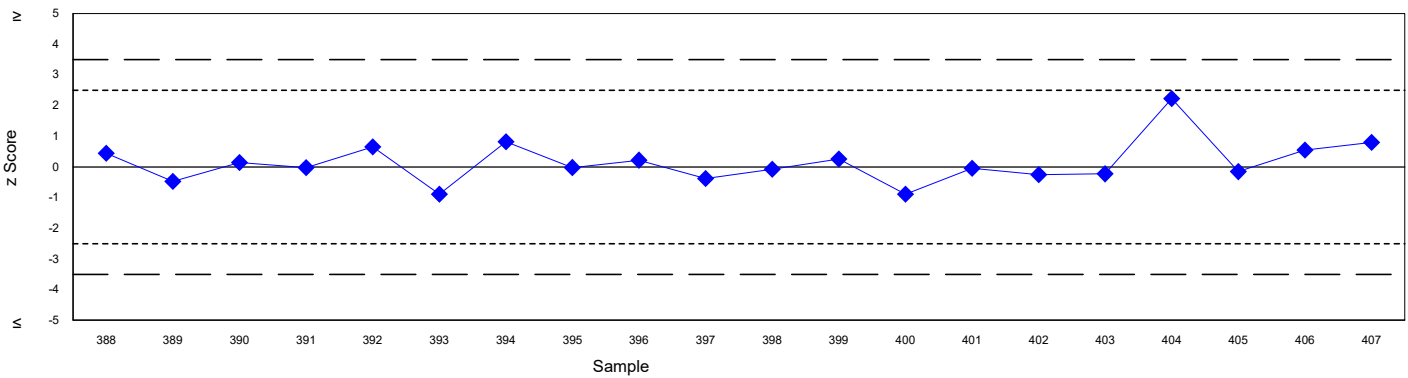
CD3+ Lymphocytes



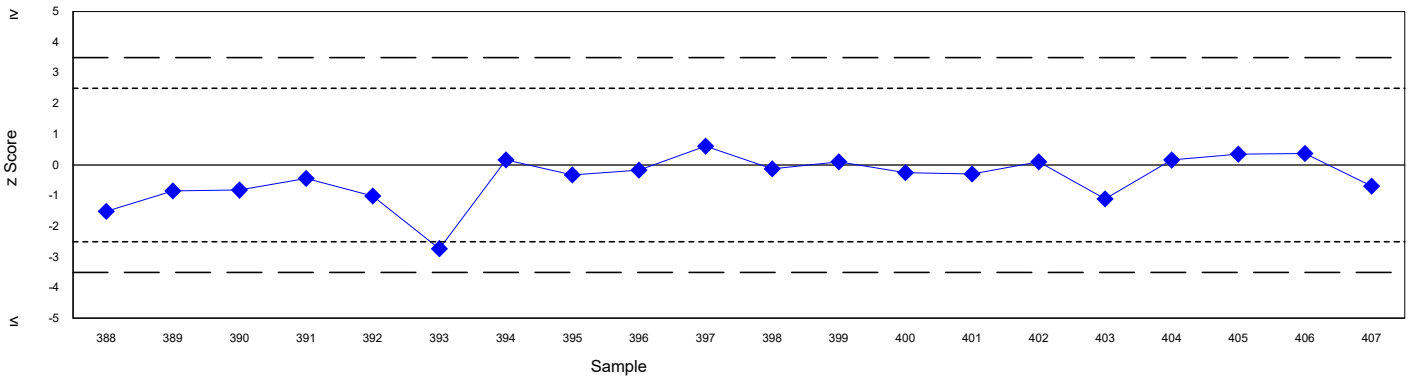
CD3+/CD4+ Lymphocytes



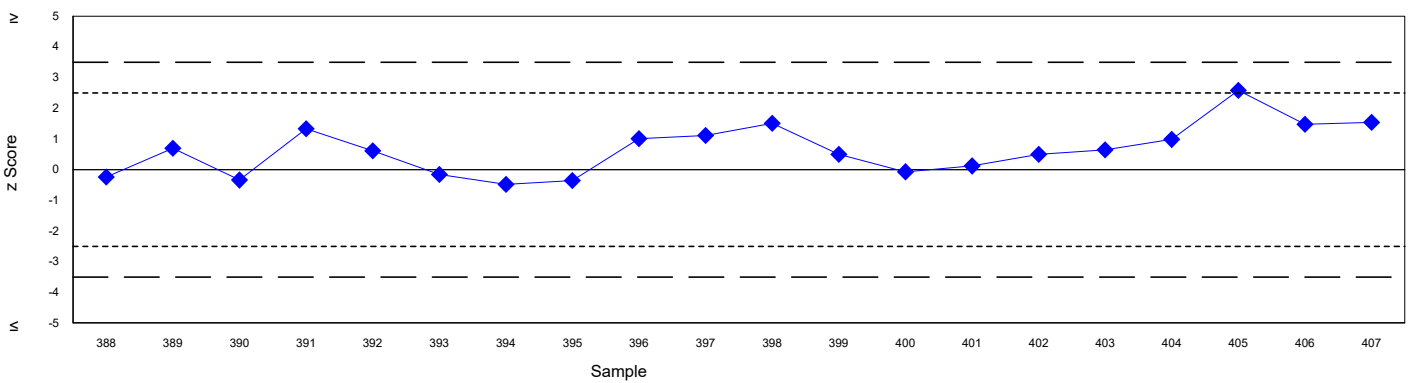
CD3+/CD8+ Lymphocytes



CD16+/CD56+ Lymphocytes



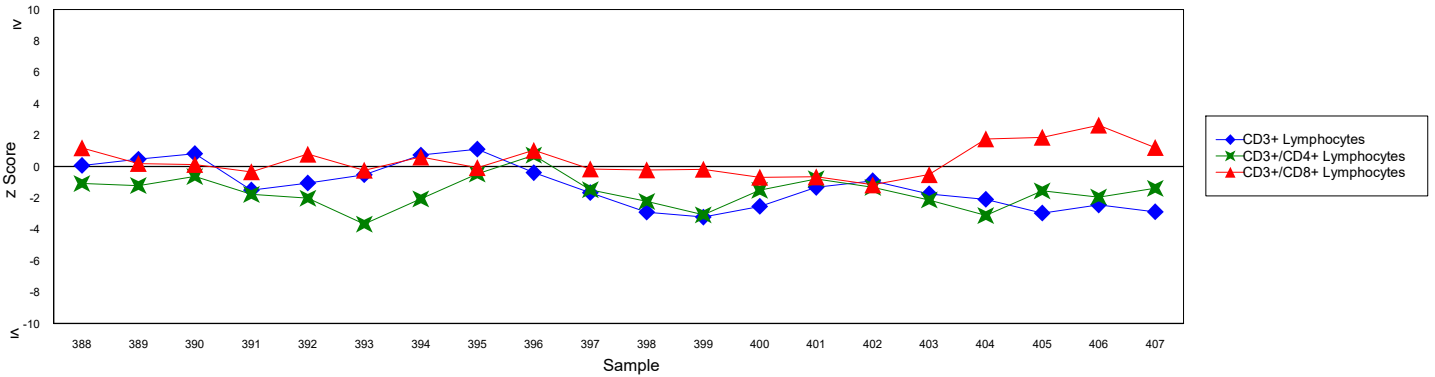
CD19+ Lymphocytes



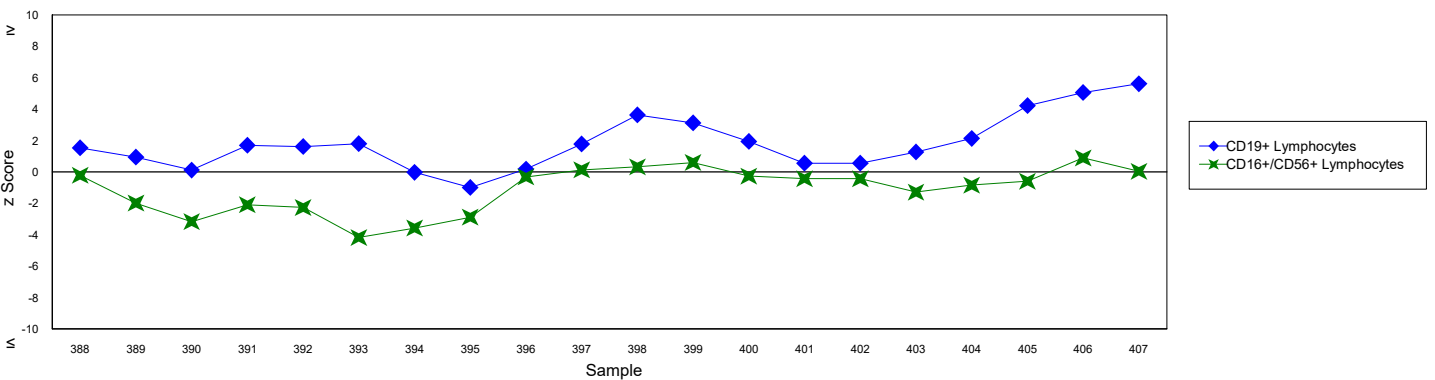
Cusum Control Charts

(Please note each data point represents the sum of the z scores of the current sample and the two previous samples)

Percentage Values (%)



Percentage Values (%)



Platform Specific Statistics

(Please note only groups of >=20 returns are displayed)

Method	Absolute Count Values (cells/ μ L)			Percentage Values		
	Returns	Robust Mean	Robust SD	Returns	Robust Mean	Robust SD
FLOW COUNT	79	431.2	31.0	75	77.7	1.2
HAEM. WBC	19	485.3	89.3	25	78.0	1.6
TRUCOUNT	214	475.4	33.2	210	77.2	1.2

Method	Absolute Count Values (cells/ μ L)			Percentage Values		
	Returns	Robust Mean	Robust SD	Returns	Robust Mean	Robust SD
FLOW COUNT	80	186.1	13.1	74	33.5	1.0
HAEM. WBC	18	209.6	42.1	24	33.8	1.4
TRUCOUNT	208	203.4	15.8	205	33.1	1.1

Method	Absolute Count Values (cells/ μ L)			Percentage Values		
	Returns	Robust Mean	Robust SD	Returns	Robust Mean	Robust SD
FLOW COUNT	75	212.8	15.4	71	38.1	1.1
HAEM. WBC	18	239.4	42.3	24	38.7	2.1
TRUCOUNT	207	237.1	18.1	204	38.5	1.3

Method	Absolute Count Values (cells/ μ L)			Percentage Values		
	Returns	Robust Mean	Robust SD	Returns	Robust Mean	Robust SD
FLOW COUNT	68	55.5	7.3	68	9.9	0.9
HAEM. WBC	17	56.0	10.5	23	9.1	1.2
TRUCOUNT	188	65.0	6.8	185	10.5	0.8

Method	Absolute Count Values (cells/ μ L)			Percentage Values		
	Returns	Robust Mean	Robust SD	Returns	Robust Mean	Robust SD
FLOW COUNT	65	63.6	8.3	65	11.4	1.1
HAEM. WBC	16	68.5	13.8	22	11.2	0.9
TRUCOUNT	189	68.6	6.9	186	11.1	0.7

Antibody Manufacturer Specific Statistics

(Please note only groups of >=20 returns are displayed)

Method	Absolute Count Values (cells/ μ L)			Percentage Values		
	Returns	Robust Mean	Robust SD	Returns	Robust Mean	Robust SD
BD Biosciences	232	473.5	37.1	241	77.4	1.3
Beckman Coulter	103	431.8	32.0	107	77.7	1.3

Method	Absolute Count Values (cells/ μ L)			Percentage Values		
	Returns	Robust Mean	Robust SD	Returns	Robust Mean	Robust SD
BD Biosciences	235	201.8	17.6	242	33.1	1.2
Beckman Coulter	101	186.9	13.6	104	33.6	1.1

Method	Absolute Count Values (cells/ μ L)			Percentage Values		
	Returns	Robust Mean	Robust SD	Returns	Robust Mean	Robust SD
BD Biosciences	229	236.0	19.9	240	38.5	1.4
Beckman Coulter	96	212.5	15.7	99	38.2	1.3

Method	Absolute Count Values (cells/ μ L)			Percentage Values		
	Returns	Robust Mean	Robust SD	Returns	Robust Mean	Robust SD
BD Biosciences	202	64.3	7.3	213	10.4	0.9
Beckman Coulter	95	55.9	8.1	103	9.8	1.0

Method	Absolute Count Values (cells/ μ L)			Percentage Values		
	Returns	Robust Mean	Robust SD	Returns	Robust Mean	Robust SD
BD Biosciences	204	68.4	7.1	216	11.1	0.7
Beckman Coulter	82	63.7	8.3	88	11.3	1.1

Antibody Fluorochrome Specific Statistics

(Please note only groups of >=20 returns are displayed)

Method	Absolute Count Values (cells/ μ L)			Percentage Values		
	Returns	Robust Mean	Robust SD	Returns	Robust Mean	Robust SD
FITC	235	473.0	38.3	237	77.3	1.3
PC5	49	432.7	30.9	48	77.9	1.2

Method	Absolute Count Values (cells/ μ L)			Percentage Values		
	Returns	Robust Mean	Robust SD	Returns	Robust Mean	Robust SD
APC	76	200.0	19.1	78	33.2	1.2
PE	34	182.9	13.6	36	33.4	1.1
PE-CY7	162	202.8	17.0	164	33.2	1.1
RD1	47	187.6	13.0	44	33.8	1.0

Method	Absolute Count Values (cells/ μ L)			Percentage Values		
	Returns	Robust Mean	Robust SD	Returns	Robust Mean	Robust SD
APC-Cy7	153	236.5	18.9	155	38.3	1.3
ECD	59	213.2	15.8	57	38.2	1.2
PE	71	236.8	21.6	73	38.9	1.2

Method	Absolute Count Values (cells/ μ L)			Percentage Values		
	Returns	Robust Mean	Robust SD	Returns	Robust Mean	Robust SD
APC	204	64.3	7.2	207	10.4	0.8
ECD	57	55.2	7.6	60	9.8	0.9

Method	Absolute Count Values (cells/ μ L)			Percentage Values		
	Returns	Robust Mean	Robust SD	Returns	Robust Mean	Robust SD
PE	241	67.5	7.7	253	11.1	0.8
RD1	28	65.7	8.9	28	11.6	1.1

Flow Cytometer Specific Statistics

(Please note only groups of >=20 returns are displayed)

Method	Absolute Count Values (cells/ μ L)			Percentage Values		
	Returns	Robust Mean	Robust SD	Returns	Robust Mean	Robust SD
DxFLEX	41	433.4	38.5	42	78.0	1.6
FACSCanto II	59	462.0	38.5	65	77.4	1.8
FACSLyric	156	478.7	34.8	159	77.3	1.1
Navios	69	437.7	31.9	72	77.5	1.1

Method	Absolute Count Values (cells/ μ L)			Percentage Values		
	Returns	Robust Mean	Robust SD	Returns	Robust Mean	Robust SD
DxFLEX	40	186.4	16.3	40	33.5	1.1
FACSCanto II	56	198.5	16.7	62	33.5	1.4
FACSLyric	153	204.9	16.2	157	33.1	1.1
Navios	68	189.3	13.2	71	33.6	1.0

Method	Absolute Count Values (cells/ μ L)			Percentage Values		
	Returns	Robust Mean	Robust SD	Returns	Robust Mean	Robust SD
DxFLEX	40	214.0	17.3	40	38.4	1.6
FACSCanto II	56	231.0	25.6	62	38.7	1.7
FACSLyric	152	238.4	17.5	156	38.4	1.3
Navios	65	215.8	17.1	68	38.3	1.1

Method	Absolute Count Values (cells/ μ L)			Percentage Values		
	Returns	Robust Mean	Robust SD	Returns	Robust Mean	Robust SD
DxFLEX	36	56.4	7.2	39	9.9	0.9
FACSCanto II	51	61.7	7.7	56	10.2	1.0
FACSLyric	142	65.5	7.1	148	10.5	0.8
Navios	63	56.7	8.1	66	9.9	0.9

Method	Absolute Count Values (cells/ μ L)			Percentage Values		
	Returns	Robust Mean	Robust SD	Returns	Robust Mean	Robust SD
DxFLEX	29	61.8	6.4	32	11.1	0.8
FACSCanto II	51	68.4	8.1	55	11.5	0.9
FACSLyric	141	68.3	6.8	147	11.0	0.7
Navios	59	65.2	8.4	62	11.4	1.2

Gating Strategy Specific Statistics

(Please note only groups of >=20 returns are displayed)

Method	Absolute Count Values (cells/ μ L)			Percentage Values		
	Returns	Robust Mean	Robust SD	Returns	Robust Mean	Robust SD
CD45/SSC	318	460.9	43.0	333	77.5	1.4

Method	Absolute Count Values (cells/ μ L)			Percentage Values		
	Returns	Robust Mean	Robust SD	Returns	Robust Mean	Robust SD
CD45/SSC	317	198.0	18.6	331	33.3	1.2

Method	Absolute Count Values (cells/ μ L)			Percentage Values		
	Returns	Robust Mean	Robust SD	Returns	Robust Mean	Robust SD
CD45/SSC	315	228.7	23.2	329	38.4	1.3

Method	Absolute Count Values (cells/ μ L)			Percentage Values		
	Returns	Robust Mean	Robust SD	Returns	Robust Mean	Robust SD
CD45/SSC	291	61.7	8.5	309	10.2	0.9

Method	Absolute Count Values (cells/ μ L)			Percentage Values		
	Returns	Robust Mean	Robust SD	Returns	Robust Mean	Robust SD
CD45/SSC	281	66.9	7.8	298	11.1	0.8

Information with respect to compliance with standards BS EN ISO/IEC 17043:2023

7.4.3.2 a) The proficiency testing provider for this programme is:
UK NEQAS for Leucocyte Immunophenotyping
Pegasus House, 4th Floor Suite
463A Glossop Road
Sheffield, S10 2QD
United Kingdom
Tel: +44 (0) 114 267 3600
e-mail: admin@ukneqasli.co.uk

7.4.3.2 b) Person(s) authorising this report: Mr Stuart Scott (Director) of UK NEQAS LI.

7.4.3.2 c) Administration and shipping for this programme is provided by EQA International Limited. No other activities in relation to this EQA exercise were subcontracted.

7.4.3.2 c) Where externally provided products or services are used in the delivery of EQA, a competent supplier is used, the EQA provider is responsible for this work and participants are informed accordingly.

7.4.3.2 f) The UK NEQAS LI Privacy Policy can be found at the following link: https://sheffield-ukneqas.ipassportqms.com/document_download/NjRINTqxYzctMTI4ZS00MTg4LWI2ZDMtZDdkYzJhMTFIZlZlZ3. Participant details, their results and their performance data remain confidential unless we are required by law to share this information. Where required by law or authorised by contractual arrangements to release confidential information, UK NEQAS LI will notify those concerned of the information released, unless prohibited by law. For UK participants, the relevant National Quality Assessment Advisory Panel (NQAAP) is informed when a UK participant is identified as having performance issues. Please note, the activities of the NQAAPs are currently paused, whilst alternative funding mechanisms are sought.

7.4.3.2 h) All EQA samples are prepared in accordance with strict standard operating procedures by trained personnel proven to ensure homogeneity and stability. Where appropriate/possible EQA samples are tested prior to issue.

7.4.3.2 j), m), n), o) & r) Please refer to the UK NEQAS LI website at www.ukneqasli.co.uk for detailed information on each programme including the design and implementation of the programme, example annotated reports including and the performance systems applied to assess performance (for BS EN ISO/IEC 17043:2023 accredited programmes only). Where a scoring system refers to the 'consensus result' this means the result reported by the majority of participants for that trial issue. Advice on the interpretation of statistical analyses and the criteria on which performance is measured is also given. Please note that where different methods/procedures are used by different groups of participants these may be displayed within your report, but the same scoring system is applied to all participants irrespective of method/procedure used.

7.4.3.2 l) We do not assign values against reference materials or calibrants.

7.4.3.2 q) Details of the programme designs as authorised by The Steering Committee and Specialist Advisory Group can be found on our website at www.ukneqasli.co.uk. The proposed trial issue schedule for each programme is also available.

7.4.3.2 t) If you would like to discuss the outcomes of this trial issue, please contact UK NEQAS LI using the contact details provided. Alternatively, if you are unhappy with your performance classification for this trial, please find the appeals procedure at www.ukneqasli.co.uk/contact-us/appeals-and-complaints/

7.4.3.2) The UK NEQAS LI Policy for the Use of Reports by Individuals and Organisations states that all EQA reports are subject to copyright, and, as such, permission must be sought from UK NEQAS LI for the use of any data and/or reports in any media prior to use. See associated policy on the UK NEQAS LI website: <http://www.ukneqasli.co.uk/eqa-pt-programmes/new-participant-information/>