

Low Level Leucocyte Enumeration Programme

All Participant Report

Distribution - 252602

Sample - RBC754

Participant ID -

Date Issued - 23 September 2025

Closing Date - 13 October 2025

Machine Used - FACSLyric

Trial Comments

This exercise was issued to 100 participants of which 93 (93%) returned results at the time of report generation. There were two extension requests and one pre-notified non-return at the time of report generation.

Sample Comments

The sample was manufactured by UK NEQAS using a sample of filtered blood from an anonymous donor which was stabilised and spiked with stabilised buffy coat.

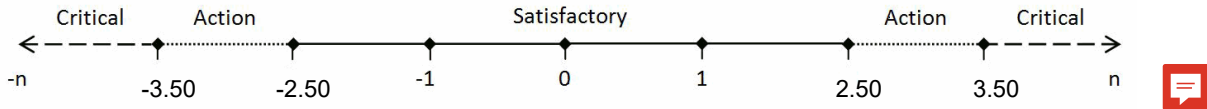
Results and Performance

Cell Population	Your Results (cells/ μ L)	Robust Mean (cells/ μ L)	Robust SD (cells/ μ L)	Uncertainty of the Assigned Value (Robust Mean)
FACSLyric	20.27	23.53	3.16	\pm 0.38

Cell Population	z Score*	Performance Status for this Sample	Performance Status Classification Over 12 Sample Period		
			Satisfactory	Action	Critical
FACSLyric	-1.03	Satisfactory	12	0	0


***z Score Limits Definitions**

Please note the scale below is applicable to the tables above and to the z score histograms and Shewhart control charts that follow. It is not applicable to the Cusum control charts.

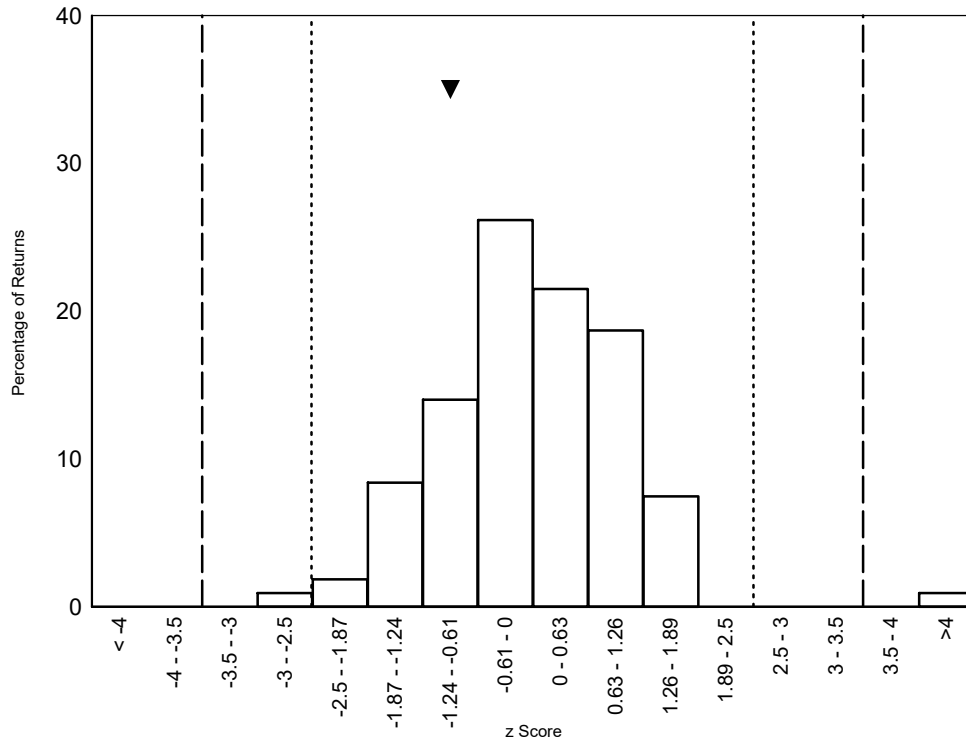


Low Level Leucocyte Enumeration Programme

Histograms of Participant z-scores

Absolute Values (cells/ μ L) - FACSLytic 

Please note ▼ denotes your result



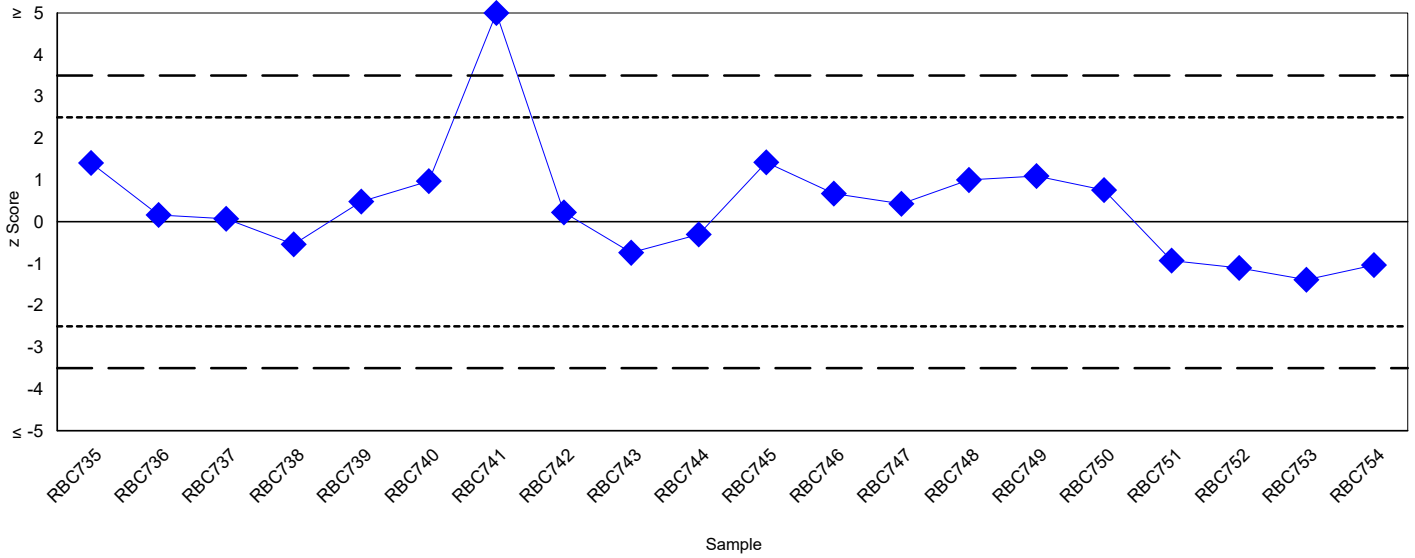
Low Level Leucocyte Enumeration Programme

Shewhart Control Charts

(Please note each data point represents a single sample)



Absolute Values (cells/ μ L) - FACSLyric

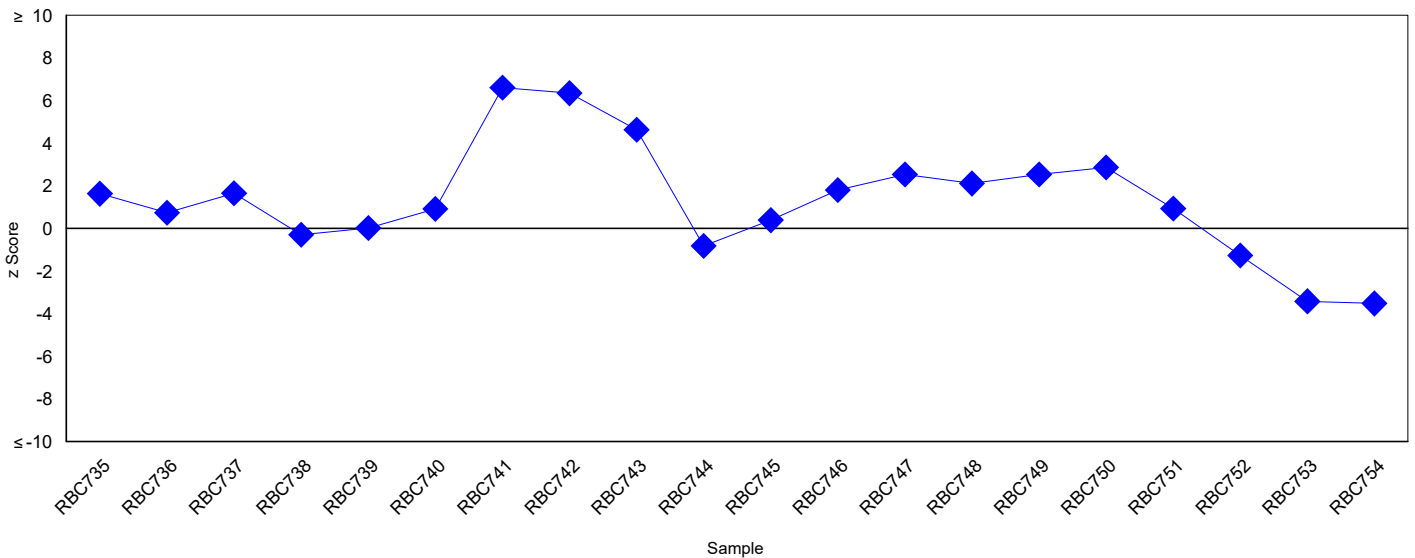


Cusum Control Charts



(Please note each data point represents the sum of the z scores of the current sample and the two previous samples)

Absolute Values (cells/ μ L) - FACSLyric



Low Level Leucocyte Enumeration Programme

Staining Method Specific Statistics

(Please note only groups of ≥ 20 returns are displayed)



Method	Absolute Count Values (cells/ μ L)		
	Returns	Robust Mean	Robust SD
BD Leucocount	78	23.91	3.07
Leukosure	21	22.18	2.75

Flow Cytometer Specific Statistics

(Please note only groups of ≥ 20 returns are displayed)



Method	Absolute Count Values (cells/ μ L)		
	Returns	Robust Mean	Robust SD
FACSLyric	33	24.29	2.81

Low Level Leucocyte Enumeration Programme

Distribution - 252602

Sample - RBC755

Participant ID -

Date Issued - 23 September 2025

Closing Date - 13 October 2025

Machine Used - FACSLyric

Trial Comments

This exercise was issued to 100 participants of which 93 (93%) returned results at the time of report generation. There were two extension requests and one pre-notified non-return at the time of report generation.

Sample Comments

The sample was manufactured by UK NEQAS using a sample of filtered blood from an anonymous donor which was stabilised and spiked with stabilised buffy coat.

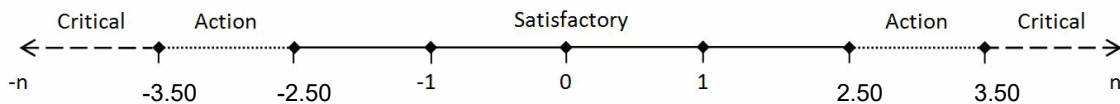
Results and Performance

Cell Population	Your Results (cells/ μ L)	Robust Mean (cells/ μ L)	Robust SD (cells/ μ L)	Uncertainty of the Assigned Value (Robust Mean)
FACSLyric	16.67	19.43	2.37	± 0.29

Cell Population	z Score*	Performance Status for this Sample	Performance Status Classification Over 12 Sample Period		
			Satisfactory	Action	Critical
FACSLyric	-1.16	Satisfactory	12	0	0

*z Score Limits Definitions

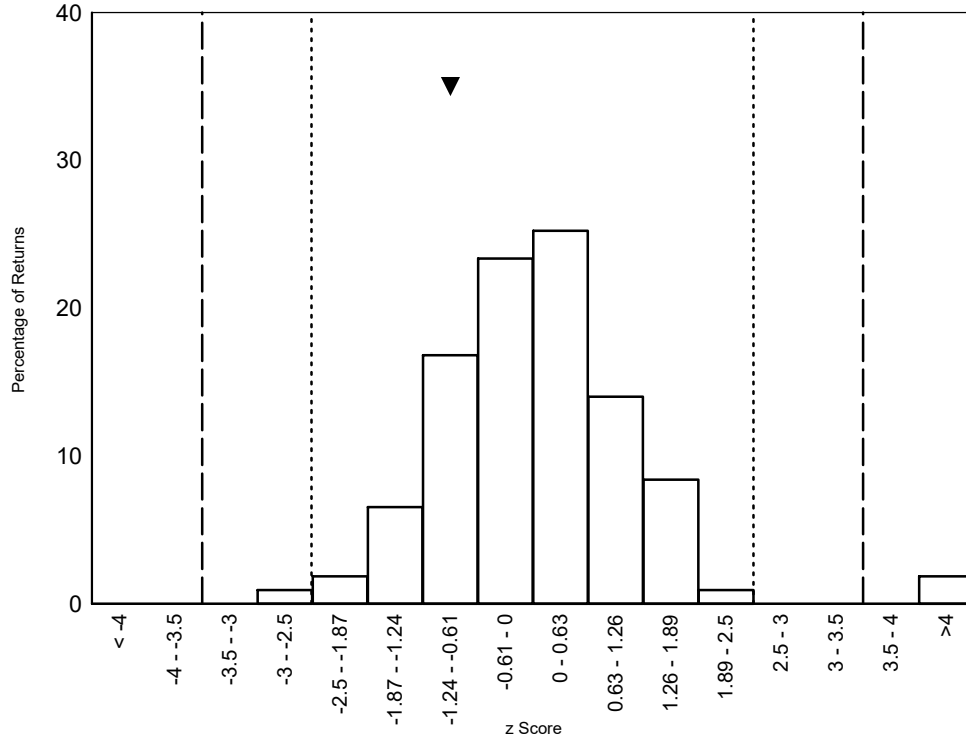
Please note the scale below is applicable to the tables above and to the z score histograms and Shewhart control charts that follow. It is not applicable to the Cusum control charts.



Low Level Leucocyte Enumeration Programme

Histograms of Participant z-scores

Absolute Values (cells/ μ L) - FACSLytic
Please note ▼ denotes your result

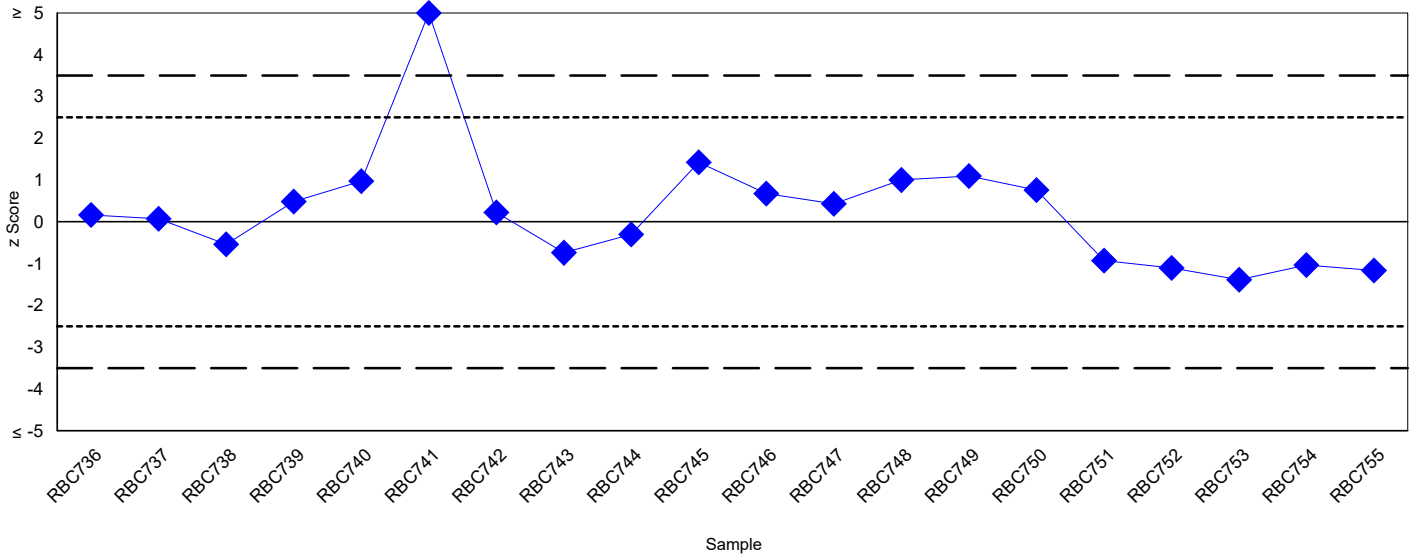


Low Level Leucocyte Enumeration Programme

Shewhart Control Charts

(Please note each data point represents a single sample)

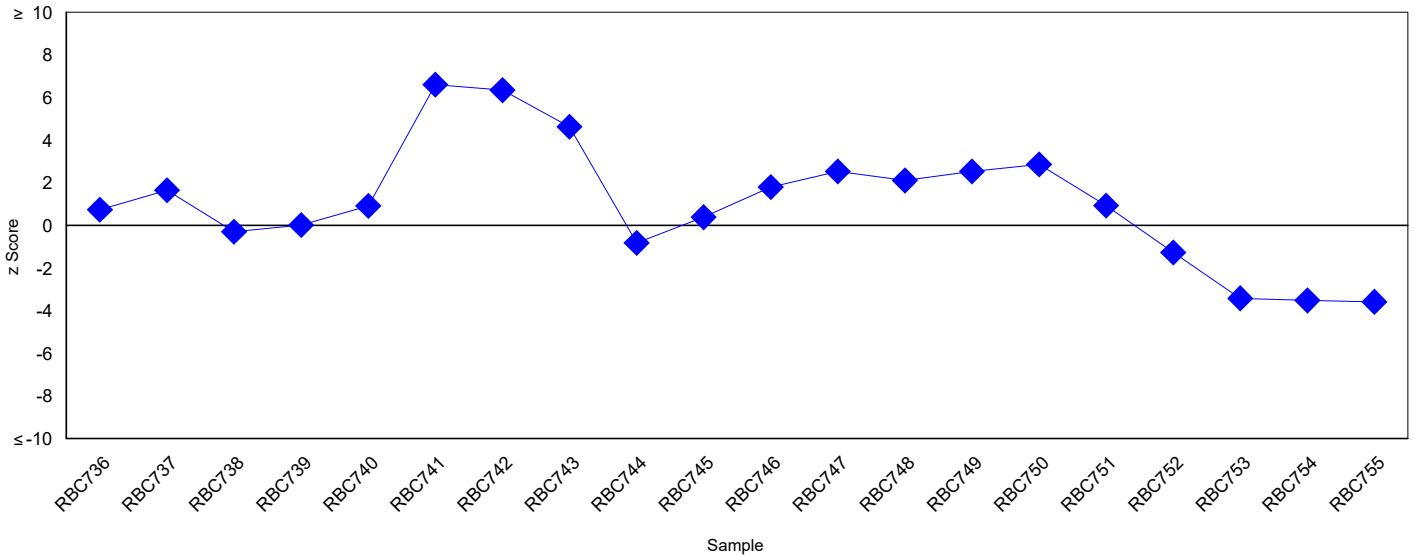
Absolute Values (cells/ μ L) - FACSLyric



Cusum Control Charts

(Please note each data point represents the sum of the z scores of the current sample and the two previous samples)

Absolute Values (cells/ μ L) - FACSLyric



Low Level Leucocyte Enumeration Programme

Staining Method Specific Statistics

(Please note only groups of ≥ 20 returns are displayed)

Method	Absolute Count Values (cells/ μ L)		
	Returns	Robust Mean	Robust SD
BD Leucocount	78	19.49	2.46
Leukosure	21	18.81	1.75

Flow Cytometer Specific Statistics

(Please note only groups of ≥ 20 returns are displayed)

Method	Absolute Count Values (cells/ μ L)		
	Returns	Robust Mean	Robust SD
FACSLytic	33	19.56	2.42

Low Level Leucocyte Enumeration Programme

Distribution - 252602

Sample - RBC756

Participant ID -

Date Issued - 23 September 2025

Closing Date - 13 October 2025

Machine Used - FACSLyric

Trial Comments

This exercise was issued to 100 participants of which 93 (93%) returned results at the time of report generation. There were two extension requests and one pre-notified non-return at the time of report generation.

Sample Comments

The sample was manufactured by UK NEQAS using a sample of filtered blood from an anonymous donor which was stabilised and spiked with stabilised buffy coat.

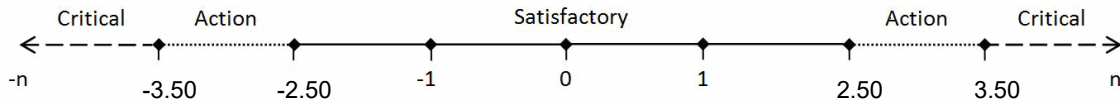
Results and Performance

Cell Population	Your Results (cells/ μ L)	Robust Mean (cells/ μ L)	Robust SD (cells/ μ L)	Uncertainty of the Assigned Value (Robust Mean)
FACSLyric	3.99	4.56	0.73	± 0.09

Cell Population	z Score*	Performance Status for this Sample	Performance Status Classification Over 12 Sample Period		
			Satisfactory	Action	Critical
FACSLyric	-0.78	Satisfactory	12	0	0

***z Score Limits Definitions**

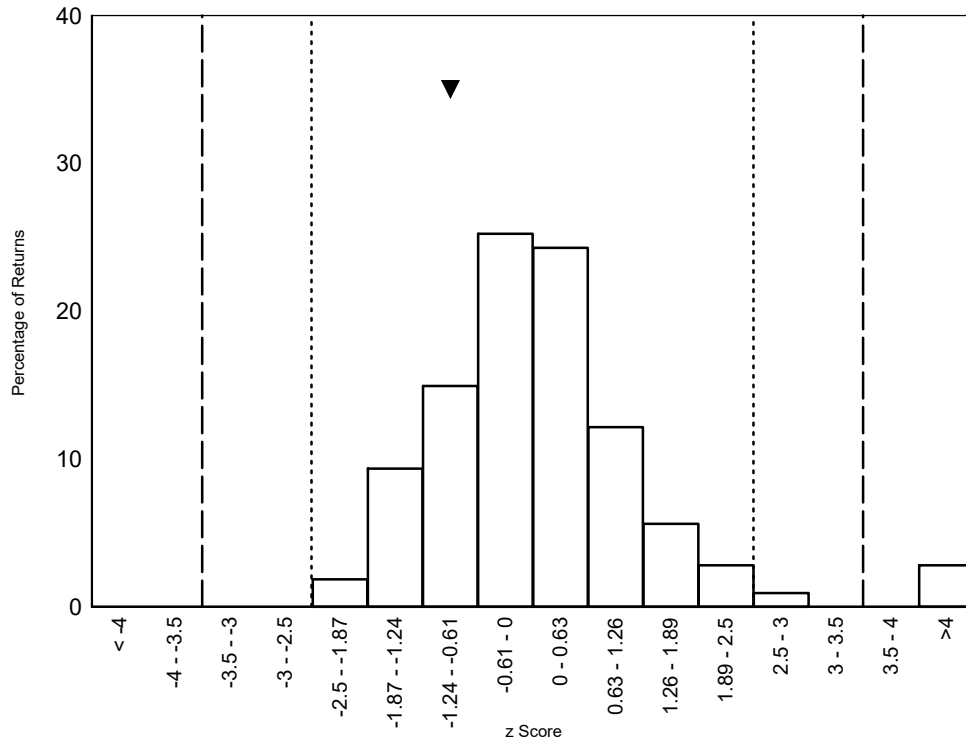
Please note the scale below is applicable to the tables above and to the z score histograms and Shewhart control charts that follow. It is not applicable to the Cusum control charts.



Low Level Leucocyte Enumeration Programme

Histograms of Participant z-scores

Absolute Values (cells/ μ L) - FACSLytic
Please note ▼ denotes your result

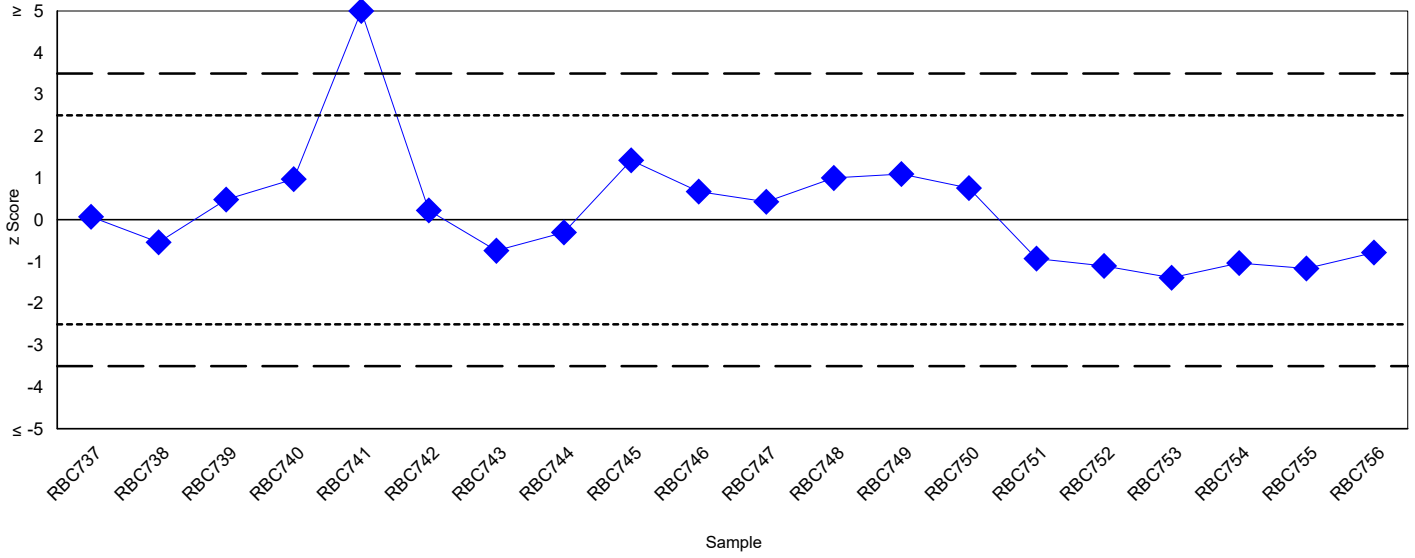


Low Level Leucocyte Enumeration Programme

Shewhart Control Charts

(Please note each data point represents a single sample)

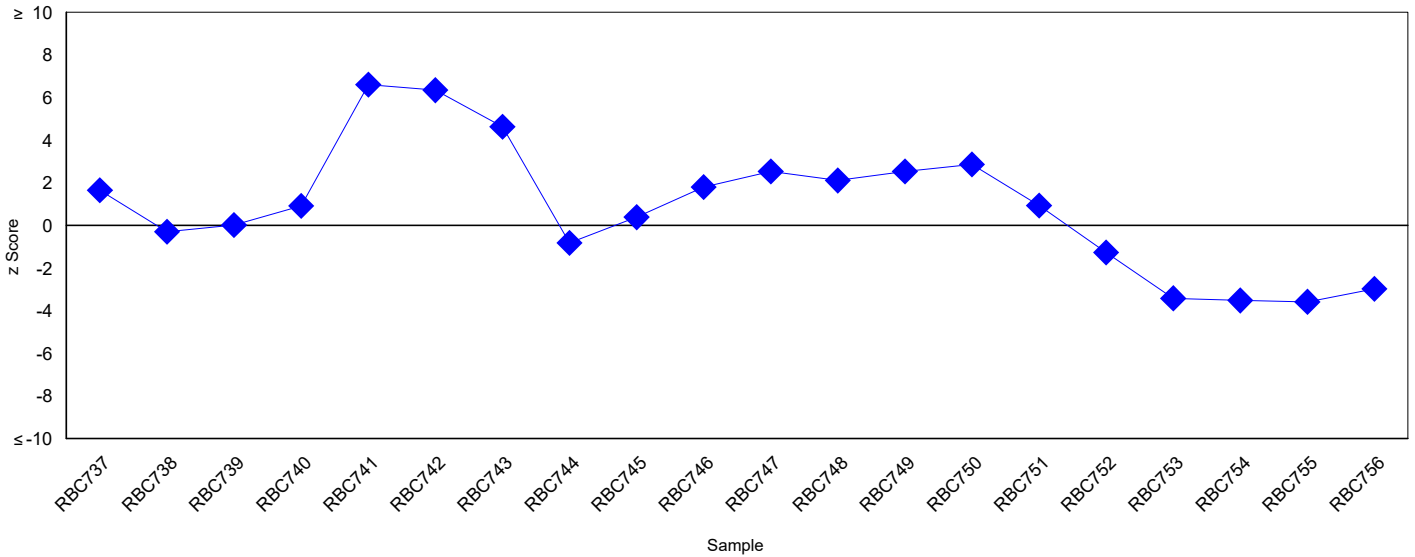
Absolute Values (cells/ μ L) - FACSLyric



Cusum Control Charts

(Please note each data point represents the sum of the z scores of the current sample and the two previous samples)

Absolute Values (cells/ μ L) - FACSLyric



Low Level Leucocyte Enumeration Programme

Staining Method Specific Statistics

(Please note only groups of ≥ 20 returns are displayed)

Method	Absolute Count Values (cells/ μ L)		
	Returns	Robust Mean	Robust SD
BD Leucocount	78	4.58	0.74
Leukosure	21	4.40	0.70

Flow Cytometer Specific Statistics

(Please note only groups of ≥ 20 returns are displayed)

Method	Absolute Count Values (cells/ μ L)		
	Returns	Robust Mean	Robust SD
FACSLytic	33	4.66	0.61

Low Level Leucocyte Enumeration Programme

Distribution - 252602

Sample - PLT754

Participant ID -

Date Issued - 23 September 2025

Closing Date - 13 October 2025

Machine Used - FACSLyric

Trial Comments

This exercise was issued to 100 participants of which 93 (93%) returned results at the time of report generation. There were two extension requests and one pre-notified non-return at the time of report generation.

Sample Comments

The sample was manufactured by UK NEQAS using a sample of platelets from an anonymous donor which was stabilised and spiked with stabilised buffy coat.

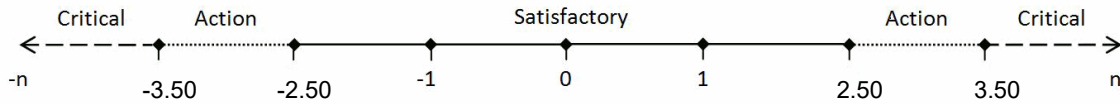
Results and Performance

Cell Population	Your Results (cells/ μ L)	Robust Mean (cells/ μ L)	Robust SD (cells/ μ L)	Uncertainty of the Assigned Value (Robust Mean)
FACSLyric	4.91	4.44	0.62	± 0.08

Cell Population	z Score*	Performance Status for this Sample	Performance Status Classification Over 12 Sample Period		
			Satisfactory	Action	Critical
FACSLyric	0.76	Satisfactory	12	0	0

***z Score Limits Definitions**

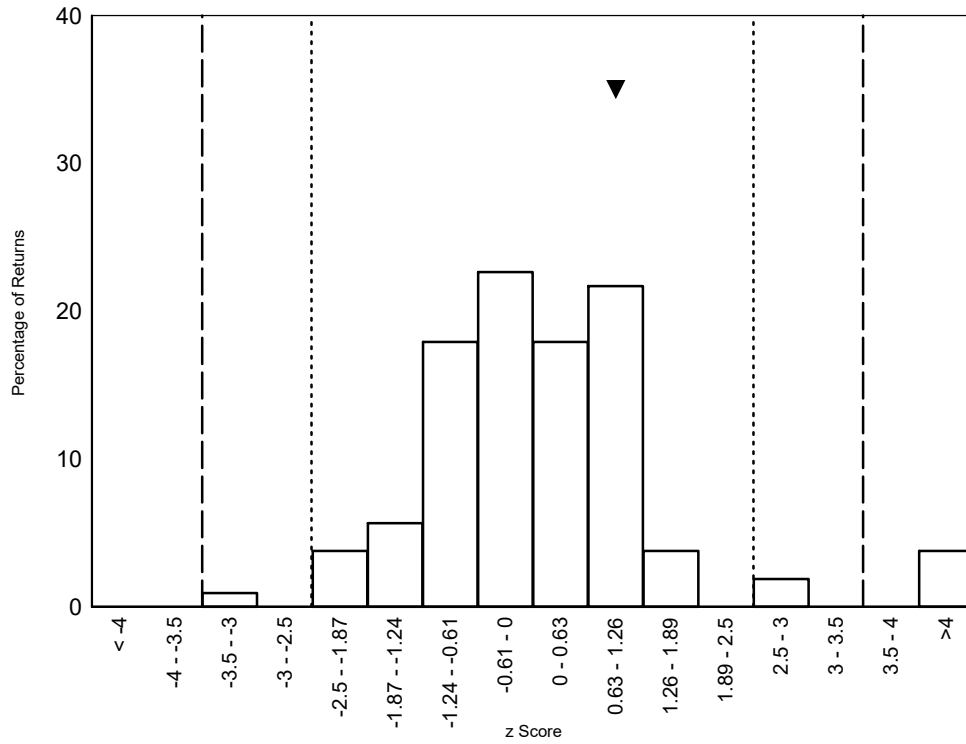
Please note the scale below is applicable to the tables above and to the z score histograms and Shewhart control charts that follow. It is not applicable to the Cusum control charts.



Low Level Leucocyte Enumeration Programme

Histograms of Participant z-scores

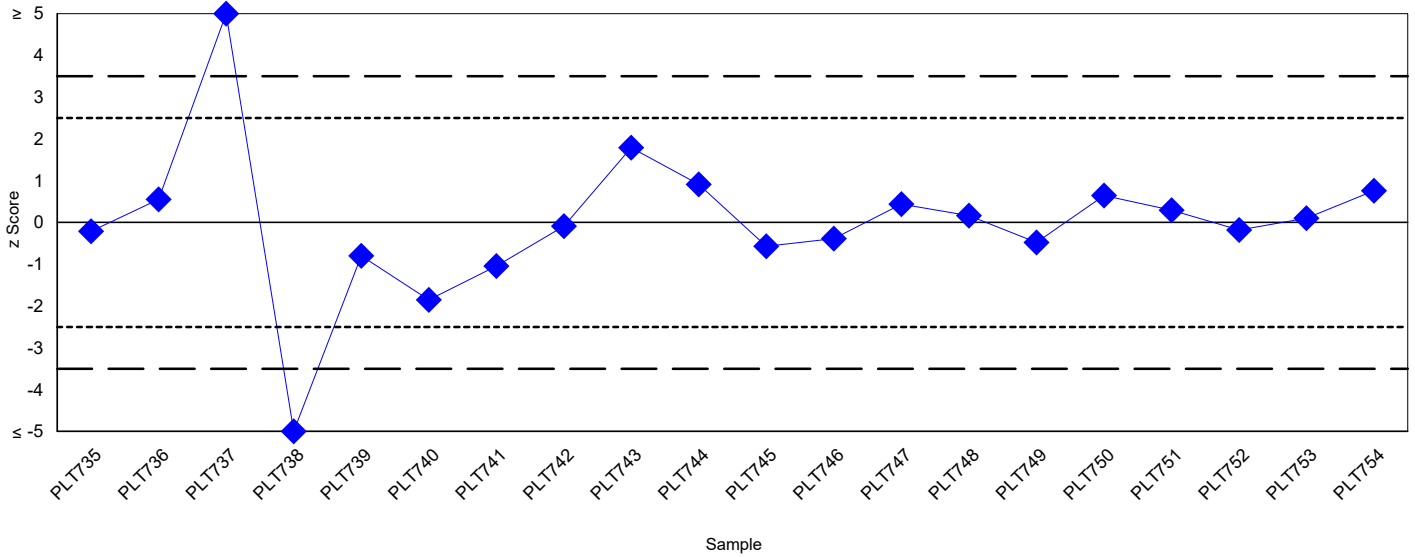
Absolute Values (cells/ μ L) - FACSLytic
Please note ▼ denotes your result



Low Level Leucocyte Enumeration Programme

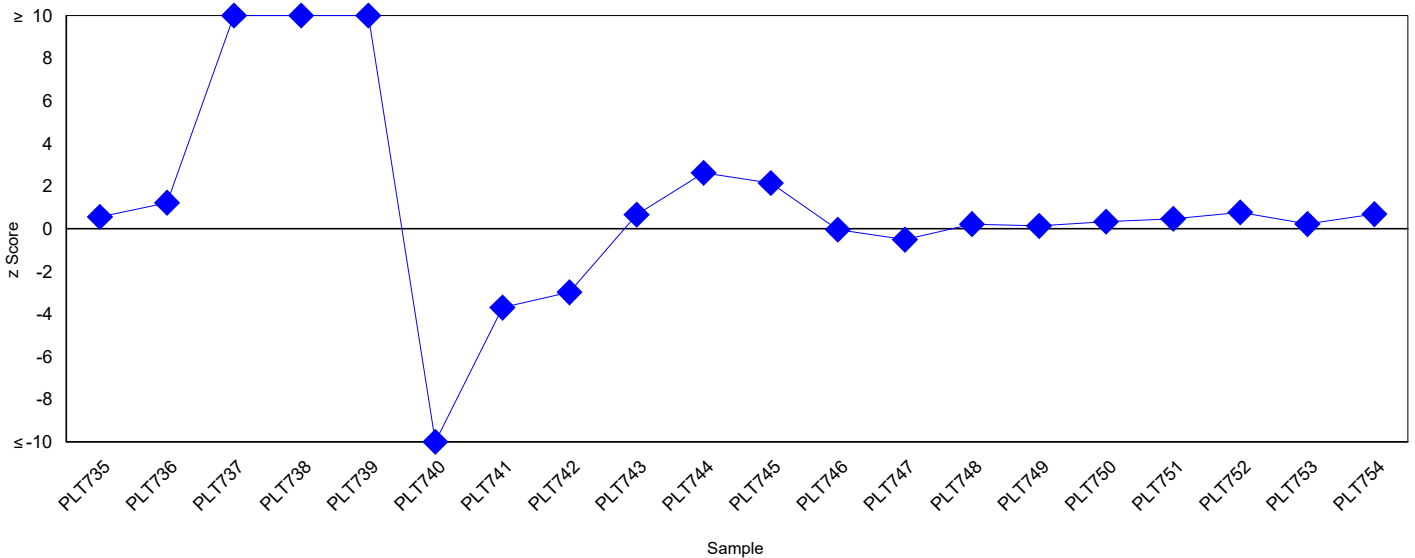
Shewhart Control Charts

(Please note each data point represents a single sample)
Absolute Values (cells/ μ L) - FACSLytic



Cusum Control Charts

(Please note each data point represents the sum of the z scores of the current sample and the two previous samples)
Absolute Values (cells/ μ L) - FACSLytic



Low Level Leucocyte Enumeration Programme

Staining Method Specific Statistics

(Please note only groups of ≥ 20 returns are displayed)

Method	Absolute Count Values (cells/ μ L)		
	Returns	Robust Mean	Robust SD
BD Leucocount	78	4.43	0.65
Leukosure	20	4.34	0.55

Flow Cytometer Specific Statistics

(Please note only groups of ≥ 20 returns are displayed)

Method	Absolute Count Values (cells/ μ L)		
	Returns	Robust Mean	Robust SD
FACSLyric	33	4.39	0.68

Low Level Leucocyte Enumeration Programme

Distribution - 252602

Sample - PLT755

Participant ID -

Date Issued - 23 September 2025

Closing Date - 13 October 2025

Machine Used - FACSLyric

Trial Comments

This exercise was issued to 100 participants of which 93 (93%) returned results at the time of report generation. There were two extension requests and one pre-notified non-return at the time of report generation.

Sample Comments

The sample was manufactured by UK NEQAS using a sample of platelets from an anonymous donor which was stabilised and spiked with stabilised buffy coat.

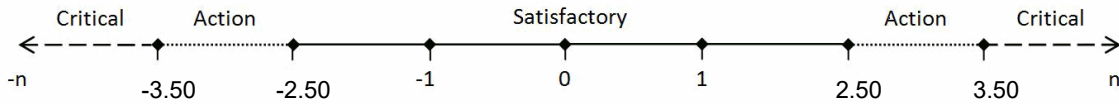
Results and Performance

Cell Population	Your Results (cells/ μ L)	Robust Mean (cells/ μ L)	Robust SD (cells/ μ L)	Uncertainty of the Assigned Value (Robust Mean)
FACSLyric	15.84	15.00	1.23	± 0.15

Cell Population	z Score*	Performance Status for this Sample	Performance Status Classification Over 12 Sample Period		
			Satisfactory	Action	Critical
FACSLyric	0.68	Satisfactory	12	0	0

***z Score Limits Definitions**

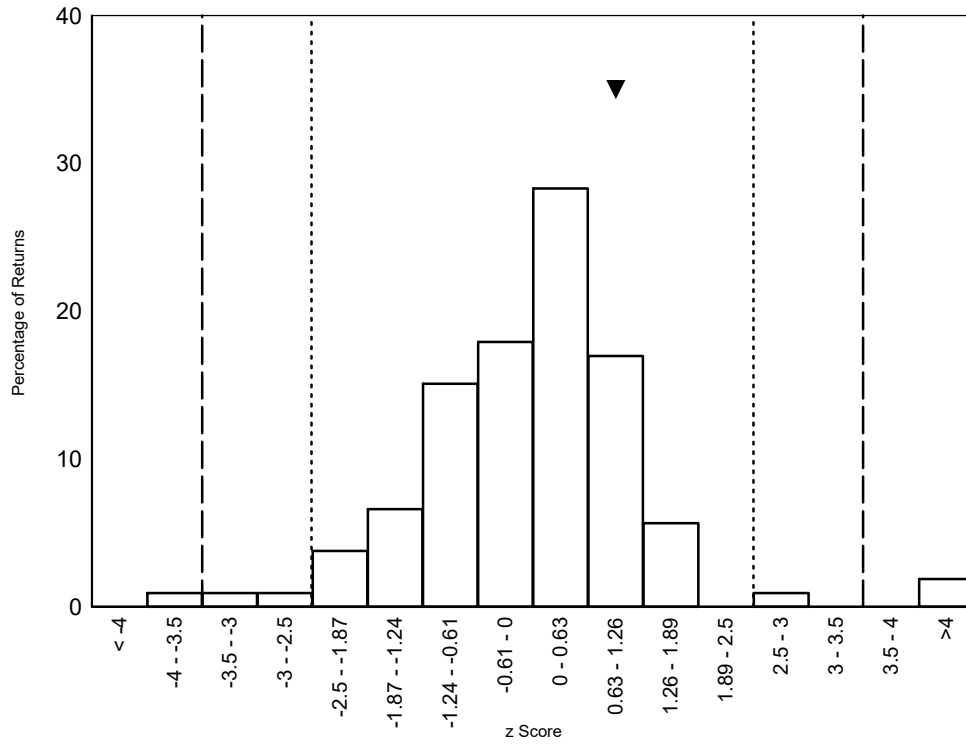
Please note the scale below is applicable to the tables above and to the z score histograms and Shewhart control charts that follow. It is not applicable to the Cusum control charts.



Low Level Leucocyte Enumeration Programme

Histograms of Participant z-scores

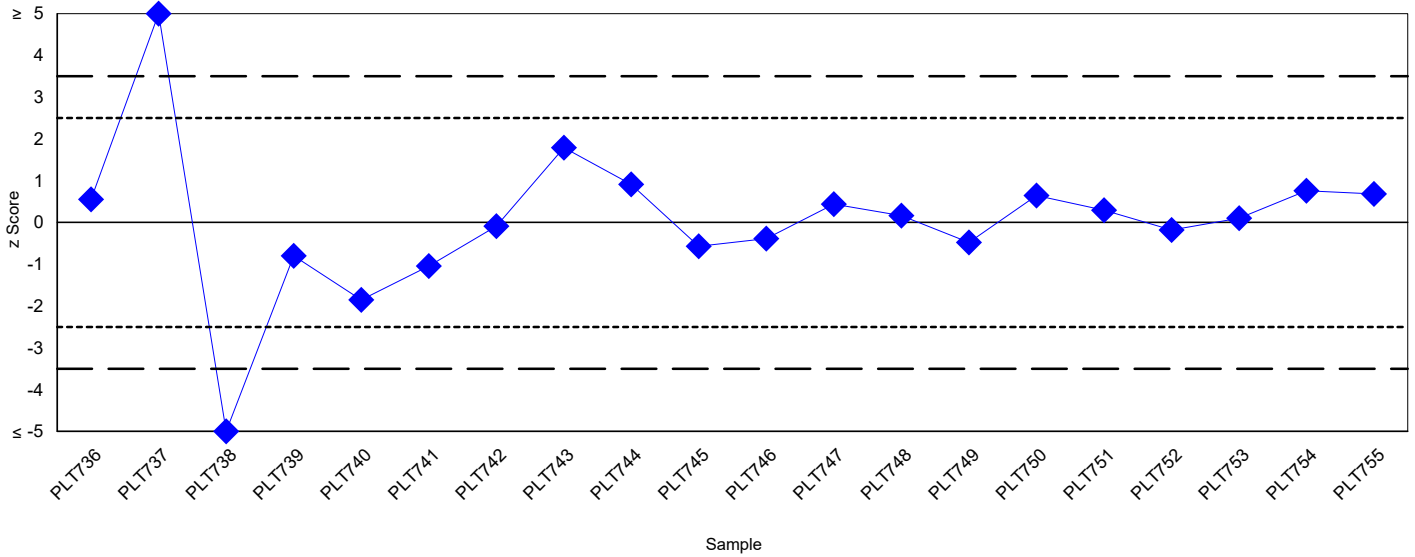
Absolute Values (cells/ μ L) - FACSLytic
Please note ▼ denotes your result



Low Level Leucocyte Enumeration Programme

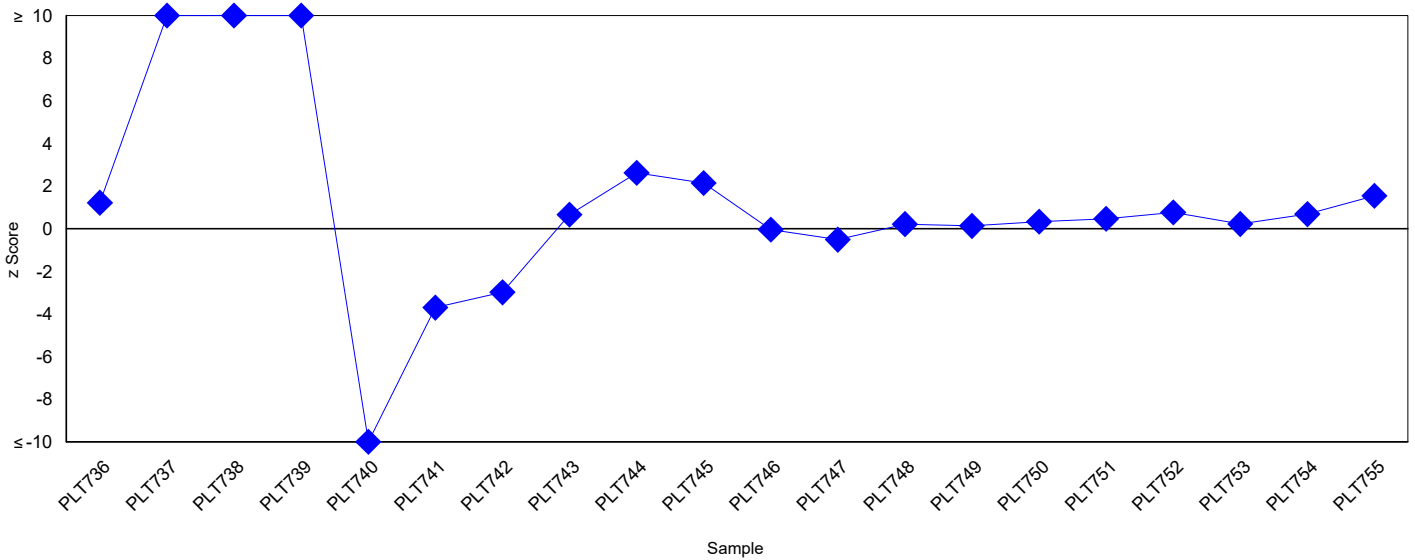
Shewhart Control Charts

(Please note each data point represents a single sample)
Absolute Values (cells/ μ L) - FACSLyric



Cusum Control Charts

(Please note each data point represents the sum of the z scores of the current sample and the two previous samples)
Absolute Values (cells/ μ L) - FACSLyric



Low Level Leucocyte Enumeration Programme

Staining Method Specific Statistics

(Please note only groups of >=20 returns are displayed)

Method	Absolute Count Values (cells/ μ L)		
	Returns	Robust Mean	Robust SD
BD Leucocount	78	14.99	1.10
Leukosure	20	14.53	1.45

Flow Cytometer Specific Statistics

(Please note only groups of >=20 returns are displayed)

Method	Absolute Count Values (cells/ μ L)		
	Returns	Robust Mean	Robust SD
FACSLytic	33	15.03	0.91

Low Level Leucocyte Enumeration Programme

Distribution - 252602

Sample - PLT756

Participant ID -

Date Issued - 23 September 2025

Closing Date - 13 October 2025

Machine Used - FACSLytic

Trial Comments

This exercise was issued to 100 participants of which 93 (93%) returned results at the time of report generation. There were two extension requests and one pre-notified non-return at the time of report generation.

Sample Comments

The sample was manufactured by UK NEQAS using a sample of platelets from an anonymous donor which was stabilised and spiked with stabilised buffy coat.

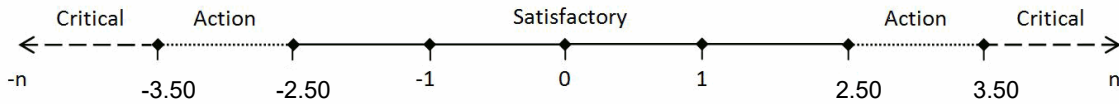
Results and Performance

Cell Population	Your Results (cells/ μ L)	Robust Mean (cells/ μ L)	Robust SD (cells/ μ L)	Uncertainty of the Assigned Value (Robust Mean)
FACSLytic	31.59	32.80	2.66	± 0.32

Cell Population	z Score*	Performance Status for this Sample	Performance Status Classification Over 12 Sample Period		
			Satisfactory	Action	Critical
FACSLytic	-0.45	Satisfactory	12	0	0

***z Score Limits Definitions**

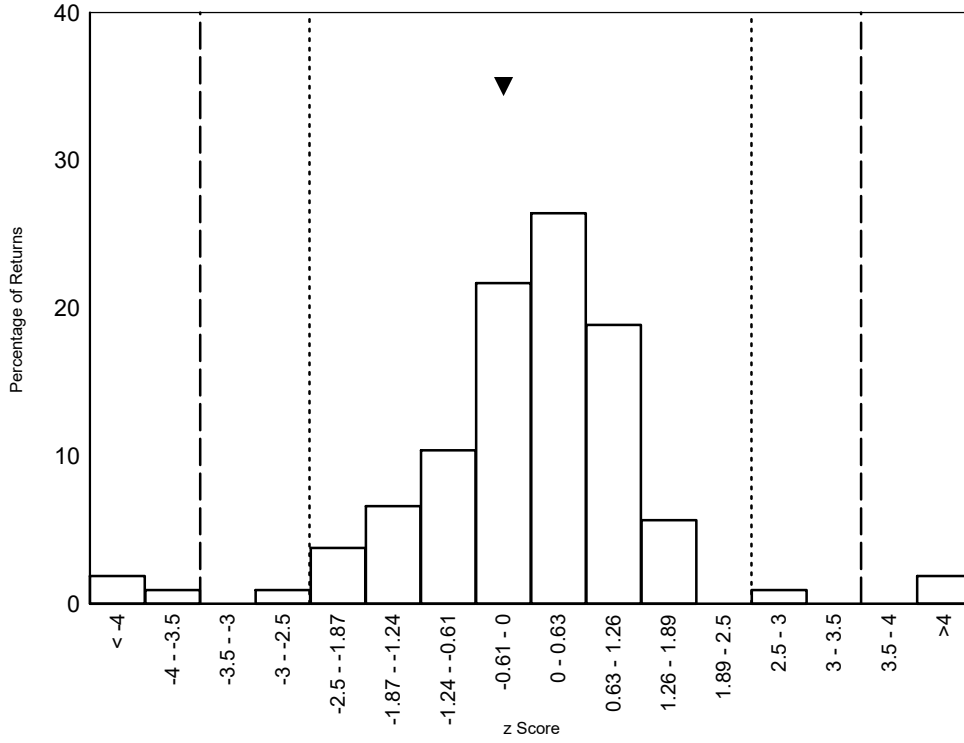
Please note the scale below is applicable to the tables above and to the z score histograms and Shewhart control charts that follow. It is not applicable to the Cusum control charts.



Low Level Leucocyte Enumeration Programme

Histograms of Participant z-scores

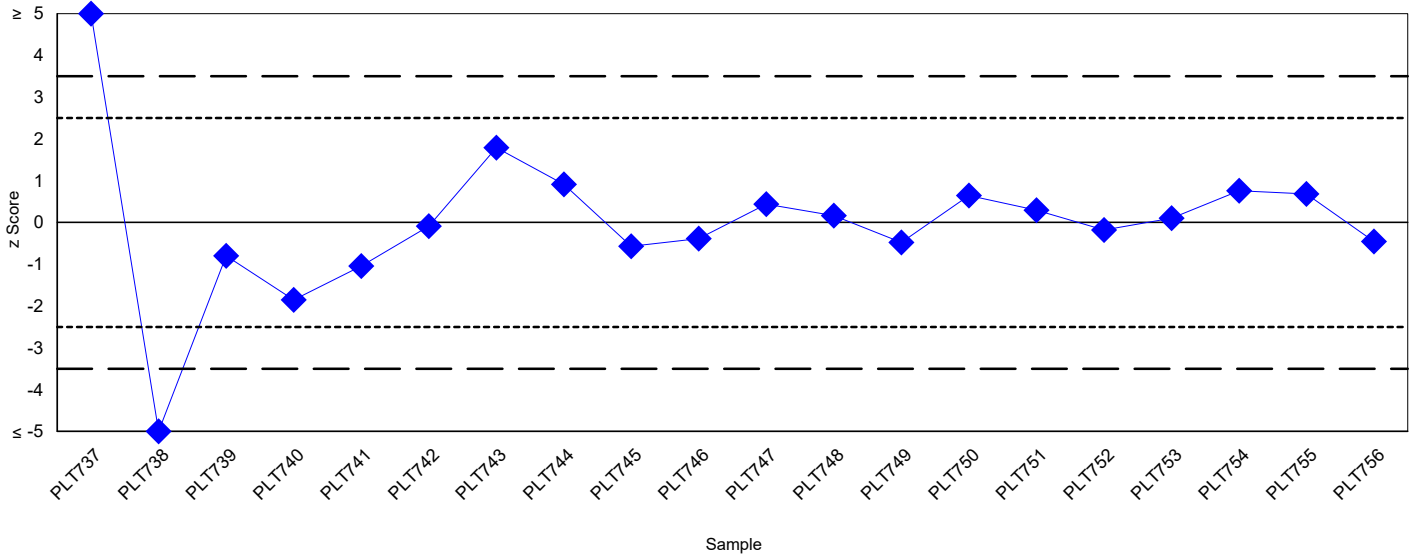
Absolute Values (cells/ μ L) - FACSLytic
Please note ▼ denotes your result



Low Level Leucocyte Enumeration Programme

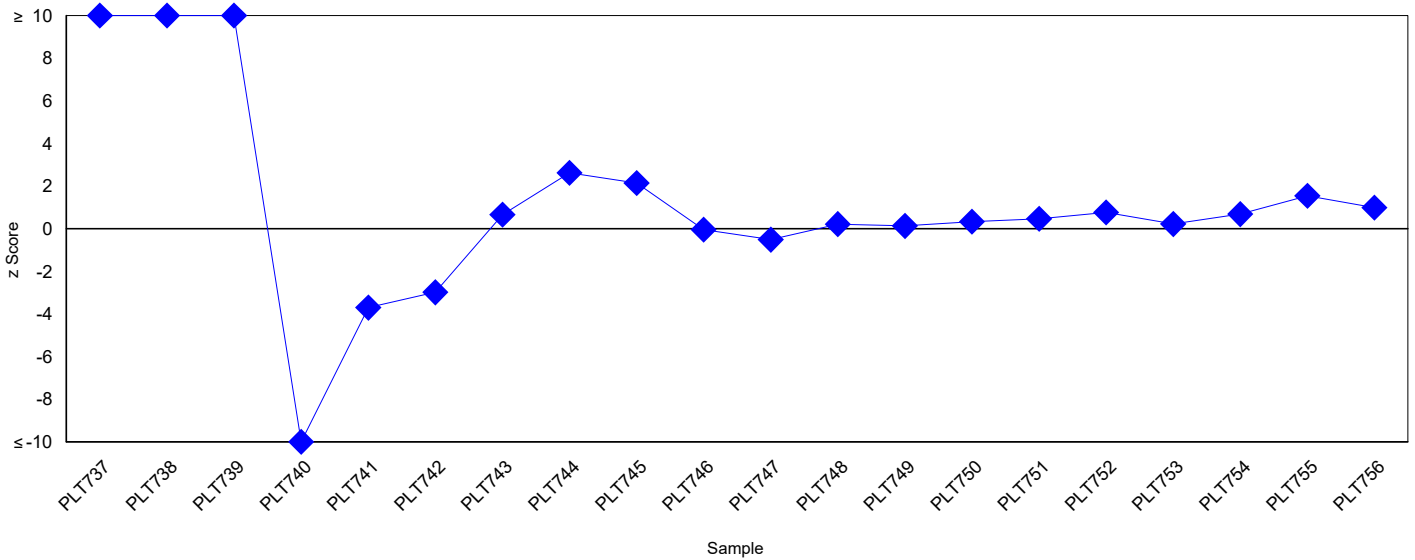
Shewhart Control Charts

(Please note each data point represents a single sample)
Absolute Values (cells/ μ L) - FACSLytic



Cusum Control Charts

(Please note each data point represents the sum of the z scores of the current sample and the two previous samples)
Absolute Values (cells/ μ L) - FACSLytic



Low Level Leucocyte Enumeration Programme

Staining Method Specific Statistics

(Please note only groups of >=20 returns are displayed)

Method	Absolute Count Values (cells/ μ L)		
	Returns	Robust Mean	Robust SD
BD Leucocount	78	32.80	2.74
Leukosure	20	32.38	2.92

Flow Cytometer Specific Statistics

(Please note only groups of >=20 returns are displayed)

Method	Absolute Count Values (cells/ μ L)		
	Returns	Robust Mean	Robust SD
FACSLyric	33	32.81	2.60

Information with respect to compliance with standards BS EN ISO/IEC 17043:2010

4.8.2 a) The proficiency testing provider for this programme is:

UK NEQAS for Leucocyte Immunophenotyping

Pegasus House, 4th Floor Suite

463A Glossop Road

Sheffield, S10 2QD

United Kingdom

Tel: +44 (0) 114 267 3600

e-mail: amanda.newbould@ukneqasli.co.uk

4.8.2 b) The coordinator(s) of UK NEQAS LI programmes: Mr Stuart Scott (acting Director).

4.8.2 c) Person(s) authorising this report: Mr Stuart Scott (acting Director) of UK NEQAS LI.

4.8.2 d) Administration and shipping for this programme is provided by EQA International Limited. No other activities in relation to this EQA exercise were subcontracted.

4.8.2 d) Where externally provided products or services are used in the delivery of EQA, a competent supplier is used, the EQA provider is responsible for this work and participants are informed accordingly.

4.8.2 g) The UK NEQAS LI Privacy Policy can be found at the following link: https://sheffield-ukneqas.ipassportqms.com/document_download/NjRINTgxYzctMTI4ZS00MTg4LWl2ZDMtZDdkYzJhMTFIZTg3

Participant details, their results and their performance data remain confidential unless we are required by law to share this information. Where required by law or authorised by contractual arrangements to release confidential information, UK NEQAS LI will notify those concerned of the information released, unless prohibited by law. For UK participants, the relevant National Quality Assessment Advisory Panel is informed when a UK participant is identified as having performance issues.

4.8.2 i) All EQA samples are prepared in accordance with strict standard operating procedures by trained personnel proven to ensure homogeneity and stability. Where appropriate/possible EQA samples are tested prior to issue. Where the sample(s) issued is stabilised blood or platelets, pre and post stability testing will have proved sample suitability prior to issue.

4.8.2 l), n), o), r) & s) Please refer to the UK NEQAS LI website at www.ukneqasli.co.uk for detailed information on each programme including the scoring systems applied to assess performance (for BS EN ISO/IEC 17043:2010 accredited programmes only). Where a scoring system refers to the 'consensus result' this means the result reported by the majority of participants for that trial issue. Advice on the interpretation of statistical analyses and the criteria on which performance is measured is also given. Please note that where different methods/procedures are used by different groups of participants these may be displayed within your report, but the same scoring system is applied to all participants irrespective of method/procedure used.

4.8.2 m) We do not assign values against reference materials or calibrants.

4.8.2 q) Details of the programme designs as authorised by The Steering Committee and Specialist Advisory Group can be found on our website at www.ukneqasli.co.uk. The proposed trial issue schedule for each programme is also available.

4.8.2 t) If you would like to discuss the outcomes of this trial issue, please contact UK NEQAS LI using the contact details provided. Alternatively, if you are unhappy with your performance classification for this trial, please find the appeals procedure at www.ukneqasli.co.uk/contact-us/appeals-and-complaints/

4.8.4) The UK NEQAS LI Policy for the Use of Reports by Individuals and Organisations states that all EQA reports are subject to copyright, and, as such, permission must be sought from UK NEQAS LI for the use of any data and/or reports in any media prior to use. See associated policy on the UK NEQAS LI website: <http://www.ukneqasli.co.uk/eqa-pt-programmes/new-participant-information/>