

Measurable Residual Disease for CLL by Flow Cytometry (Not Accredited) Programme

Distribution - 242502

Sample - 069

Participant ID -

Date Issued - 05 August 2024

Closing Date - 02 September 2024

Machine Used - FACSLyric

Trial Comments

This exercise was issued to 88 participants of which 67 (76.1%) returned results at the time of report generation. Of the non returning centres, 8 had requested an extension to the exercise deadline and 2 were pre notified non returns. Please note: this report was generated after the issue of the initial trial report due to the laboratory request for an extension to result submission.

Sample Comments

The sample was manufactured by UK NEQAS using a CLL patient sample and a stabilised whole blood unit.

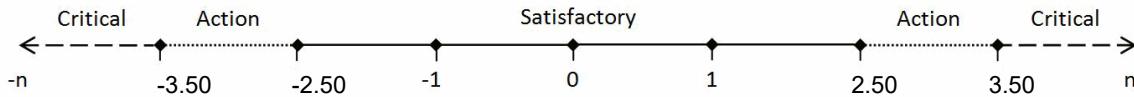
Results and Performance

Percentage MRD Population	Your Results (%)	Robust Mean (%)	Robust SD (%)	Uncertainty of the Assigned Value (Robust Mean)
	0.0420	0.0316	0.0211	± 0.00

Percentage MRD Population	z Score*	Performance Status for this Sample	Performance Status Classification Over 12 Sample Period		
			Satisfactory	Action	Critical
	0.49	Satisfactory	9	1	2

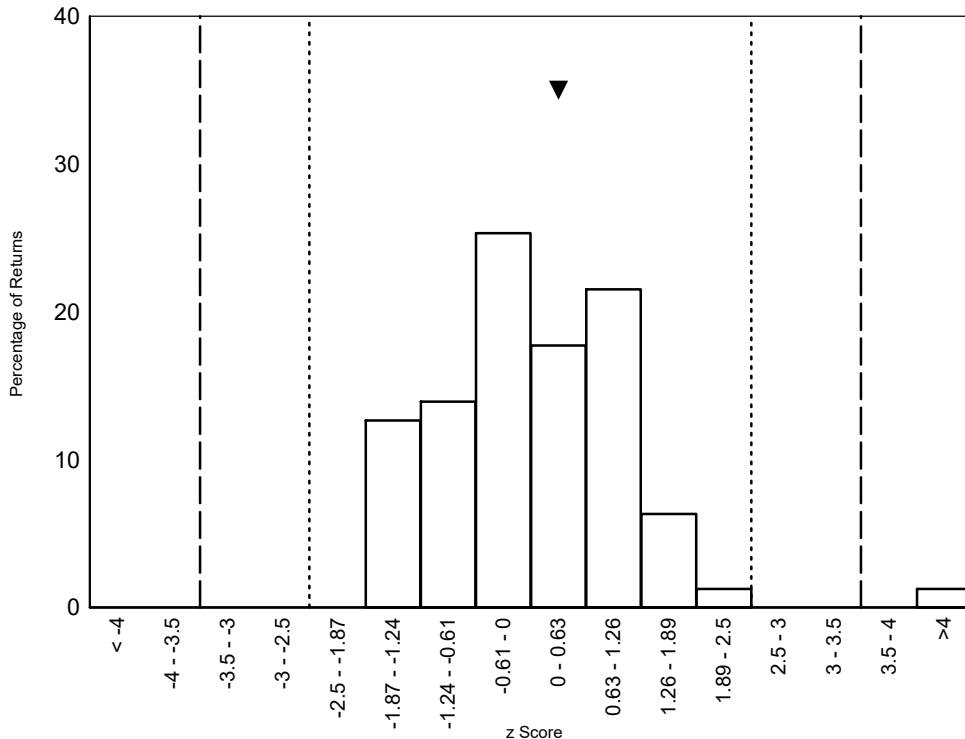
***z Score Limits Definitions**

Please note the scale below is applicable to the tables above and to the z score histograms and Shewhart control charts that follow. It is not applicable to the Cusum control charts.



Histograms of Participant z Scores

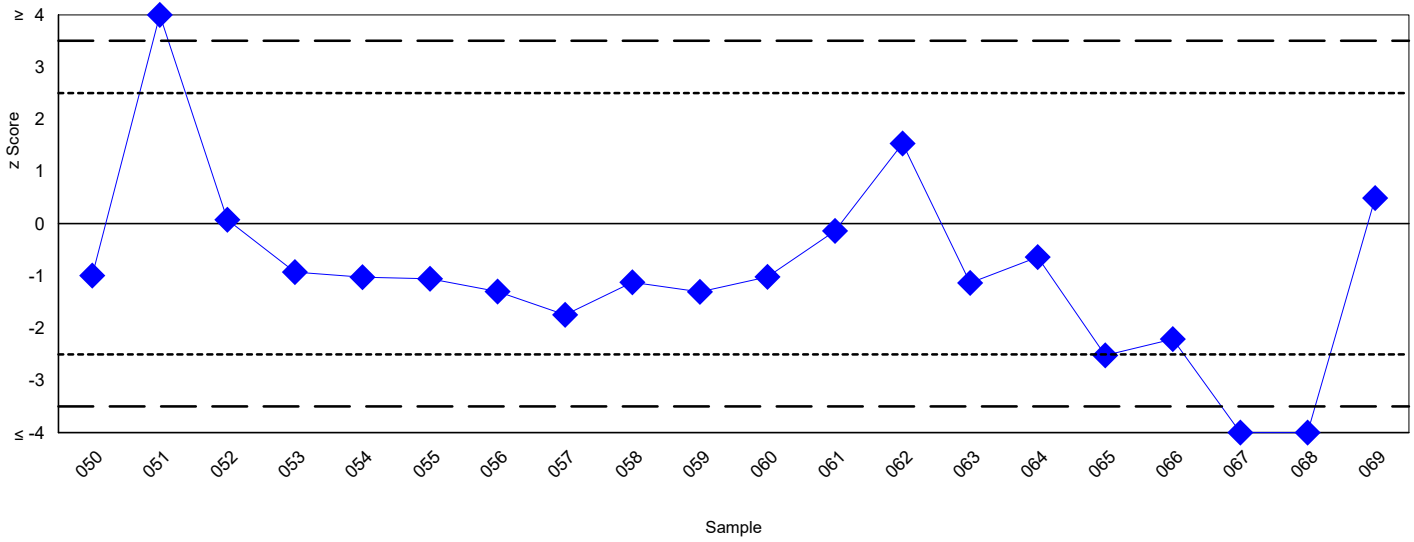
Percentage MRD Population -
Please note ▼ denotes your result



Measurable Residual Disease for CLL by Flow Cytometry (Not Accredited) Programme

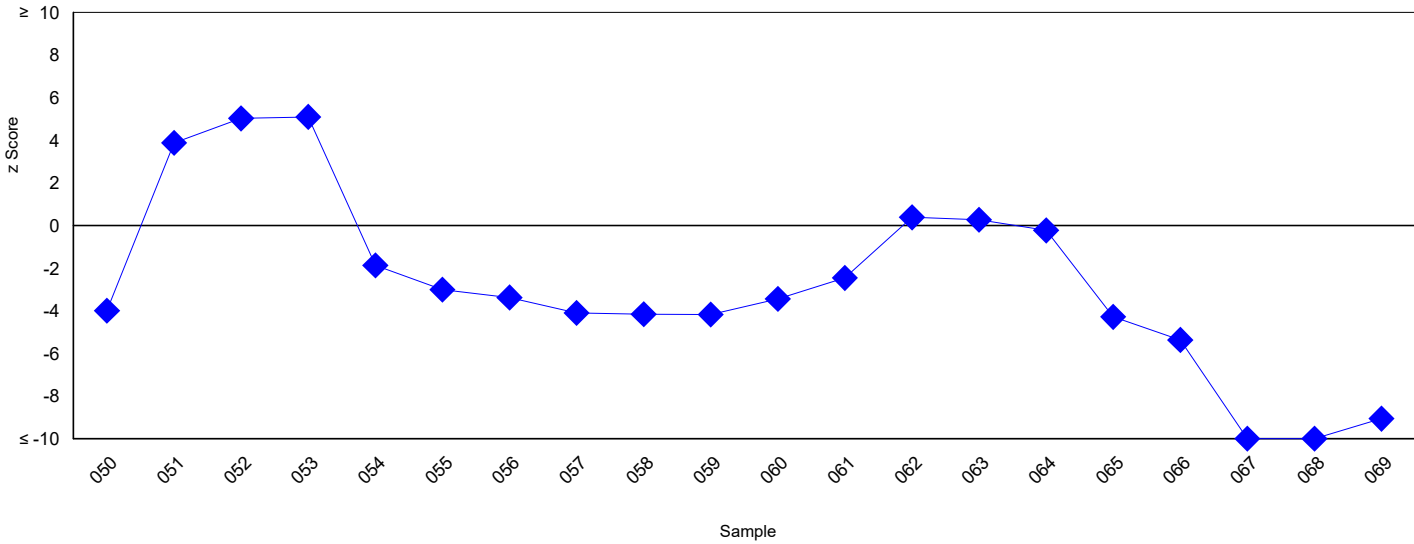
Shewhart Control Charts

(Please note each data point represents a single sample)
Values (Percentage MRD Population)



Cusum Control Charts

(Please note each data point represents the sum of the z scores of the current sample and the two previous samples)
Values (Percentage MRD Population)



Measurable Residual Disease for CLL by Flow Cytometry (Not Accredited) Programme

Flow Cytometer Specific Statistics

(Please note robust stats are only displayed for groups of 20 or more)

Method	Count Values (%)		
	Returns	Robust Mean	Robust SD
CytoFlex	1	-	-
DxFLEX	9	-	-
FACSCanto	1	-	-
FACSCanto II	22	0.0327	0.0195
FACSLyric	26	0.0311	0.0225
Gallios	1	-	-
LSRFortessa	2	-	-
Navios	12	-	-



MRD Group Specific Statistics

(Please note robust stats are only displayed for groups of 20 or more)

Method	Count Values (%)		
	Returns	Robust Mean	Robust SD
ERIC	9	-	-
Not-Affiliated	55	0.0298	0.0213
Other	7	-	-



Measurable Residual Disease for CLL by Flow Cytometry (Not Accredited) Programme

Distribution - 242502

Sample - 070

Participant ID -

Date Issued - 05 August 2024

Closing Date - 02 September 2024

Machine Used - FACSLyric

Trial Comments

This exercise was issued to 88 participants of which 67 (76.1%) returned results at the time of report generation. Of the non returning centres, 8 had requested an extension to the exercise deadline and 2 were pre notified non returns. Please note: this report was generated after the issue of the initial trial report due to the laboratory request for an extension to result submission.

Sample Comments

The sample was manufactured by UK NEQAS using a CLL patient sample and a stabilised whole blood unit.

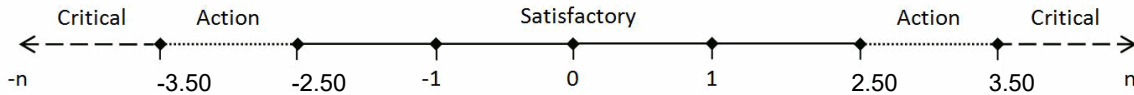
Results and Performance

Percentage MRD Population	Your Results (%)	Robust Mean (%)	Robust SD (%)	Uncertainty of the Assigned Value (Robust Mean)
	0.0230	0.0199	0.0135	± 0.00

Percentage MRD Population	z Score*	Performance Status for this Sample	Performance Status Classification Over 12 Sample Period		
			Satisfactory	Action	Critical
	0.23	Satisfactory	9	1	2

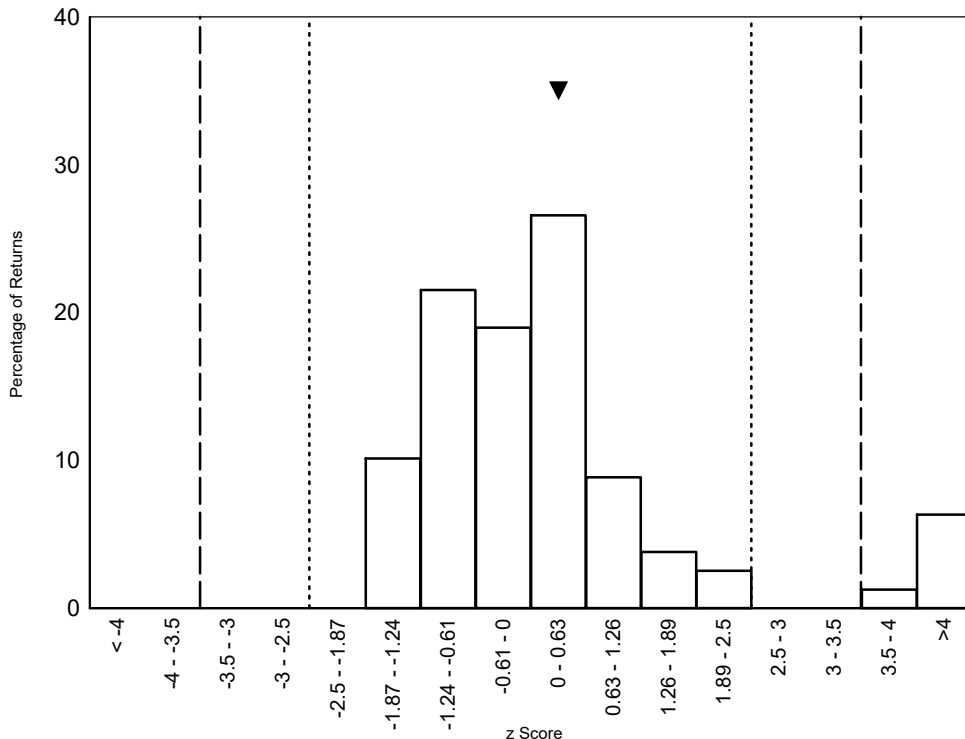
***z Score Limits Definitions**

Please note the scale below is applicable to the tables above and to the z score histograms and Shewhart control charts that follow. It is not applicable to the Cusum control charts.



Histograms of Participant z Scores

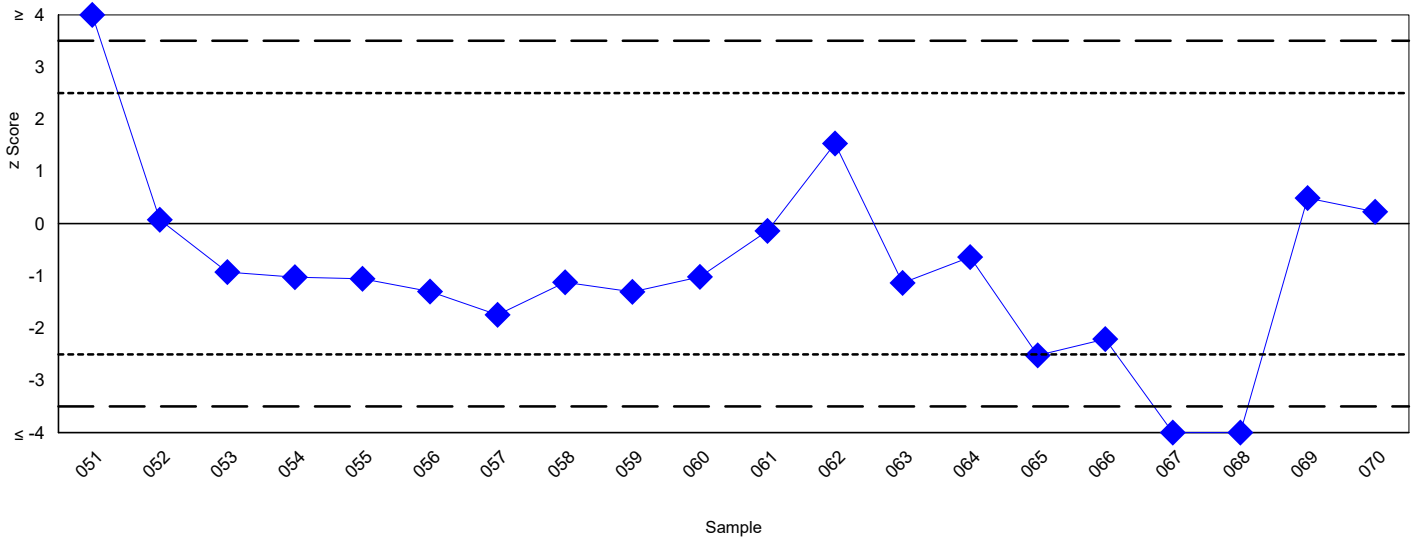
Percentage MRD Population -
Please note ▼ denotes your result



Measurable Residual Disease for CLL by Flow Cytometry (Not Accredited) Programme

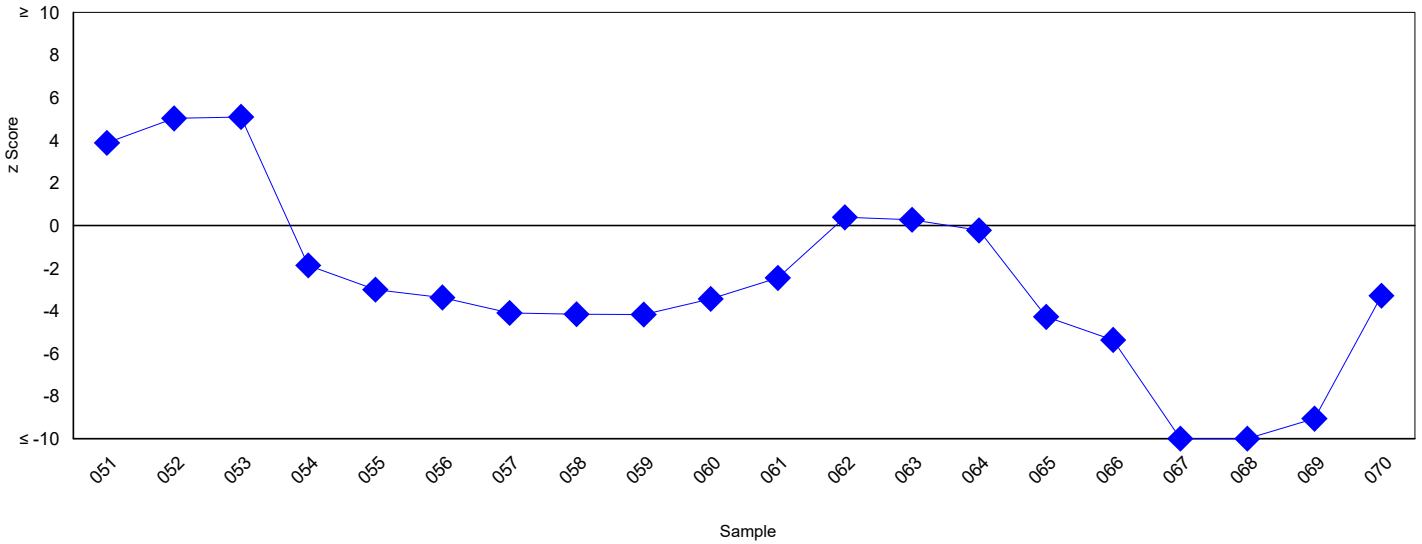
Shewhart Control Charts

(Please note each data point represents a single sample)
Values (Percentage MRD Population)



Cusum Control Charts

(Please note each data point represents the sum of the z scores of the current sample and the two previous samples)
Values (Percentage MRD Population)



Measurable Residual Disease for CLL by Flow Cytometry (Not Accredited) Programme

Flow Cytometer Specific Statistics

(Please note robust stats are only displayed for groups of 20 or more)

Method	Count Values (%)		
	Returns	Robust Mean	Robust SD
CytoFlex	1	-	-
DxFLEX	9	-	-
FACSCanto	1	-	-
FACSCanto II	22	0.0197	0.0123
FACSLyric	26	0.0190	0.0130
Gallios	1	-	-
LSRFortessa	2	-	-
Navios	12	-	-

MRD Group Specific Statistics

(Please note robust stats are only displayed for groups of 20 or more)

Method	Count Values (%)		
	Returns	Robust Mean	Robust SD
ERIC	9	-	-
Not-Affiliated	54	0.0184	0.0124
Other	8	-	-