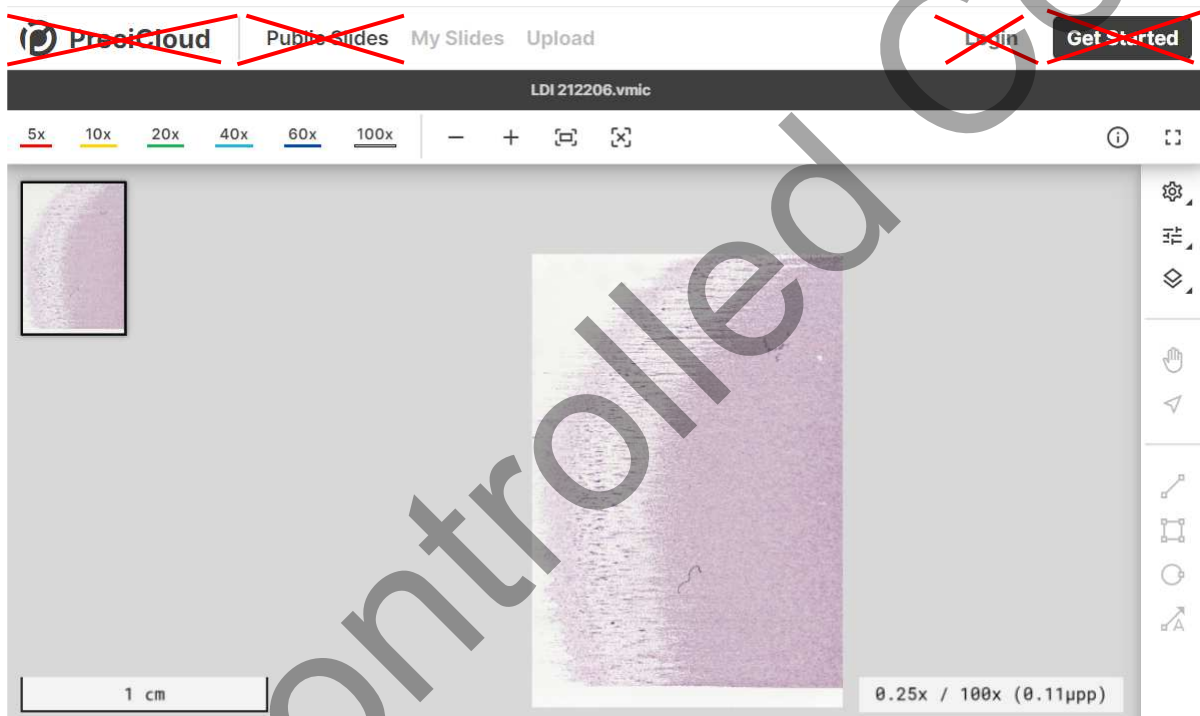


Participant Instructions for Viewing PreciPoint Scanned Images for The Leukaemia Diagnostic Interpretation (LDI) Part 2 Programme

PLEASE NOTE – The images for the LDI programme are now being hosted by PreciPoint and will, therefore appear differently to previous exercises.

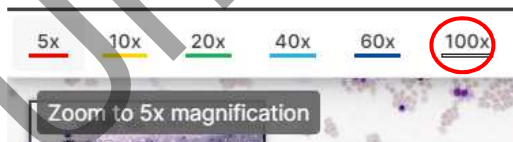
Once on the image webpage, please do not click on any of the buttons marked with a red cross (the red crosses are to highlight the buttons not to be clicked on, they do not appear on the webpage for the image). The image is accessible using the controls on the image pane. You do not need to login to access the image. Please **do not click on any of PreciCloud, Public Slides, Login or Get Started buttons** as doing so will take you away from the trial image.

If you click on any of the buttons marked with a red cross, you will have to go back to the Participant Hub and Click on the Image for Trial link to access the image again.



1. There are a number of ways to zoom in on the image.

a. The times magnification at the top left of the screen



b. The – and +





c. The FIT icon will return the magnification to fully zoomed out



d. The 100% icon will immediately magnify the image to x100

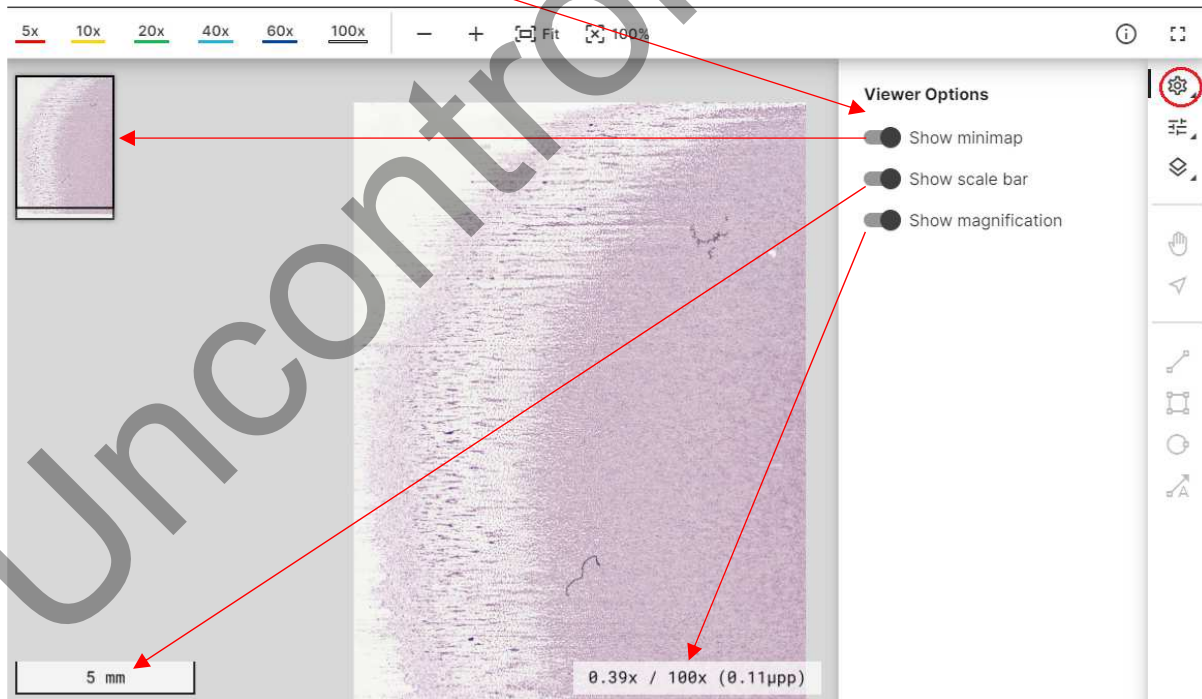


e. The scroll wheel on the mouse will zoom in or out of the image depending on which direction is scrolled

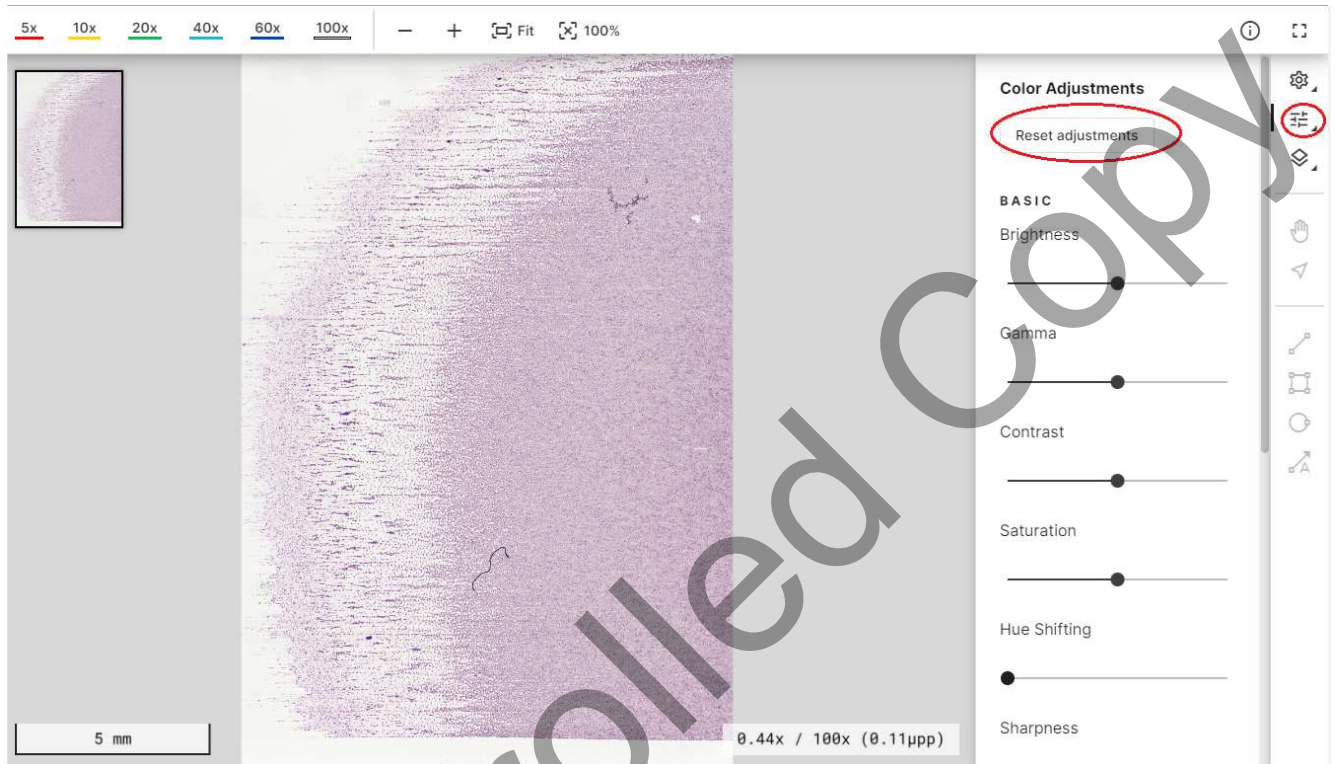
4. The  icon will show the image as full screen. Once in full screen, clicking on the  icon will exit full screen mode and return the page to the initial view

5. The cog icon (View settings) will allow addition and removal of the minimap, the scale bar and the magnifications

These can be toggled on and off



6. Clicking on the View Image filters icon allows for adjustment of brightness, colour, contrast, sharpness etc. Please note that any changes will only affect the image on your screen and will not be saved to the image seen by other participants. Also, any adjustments can be reset using the reset adjustments button.



If you have any questions about accessing the image or have a problem accessing the site, please get in touch at:

UK NEQAS for Leucocyte Immunophenotyping

Telephone: (+44) 0114 267 3600

Email: admin@ukneqasli.co.uk